

**Appendix I: Table 1: Seventeen<sup>1</sup> diked estuarine wetlands identified as potential breached-dike restoration sites in Tillamook Bay.**

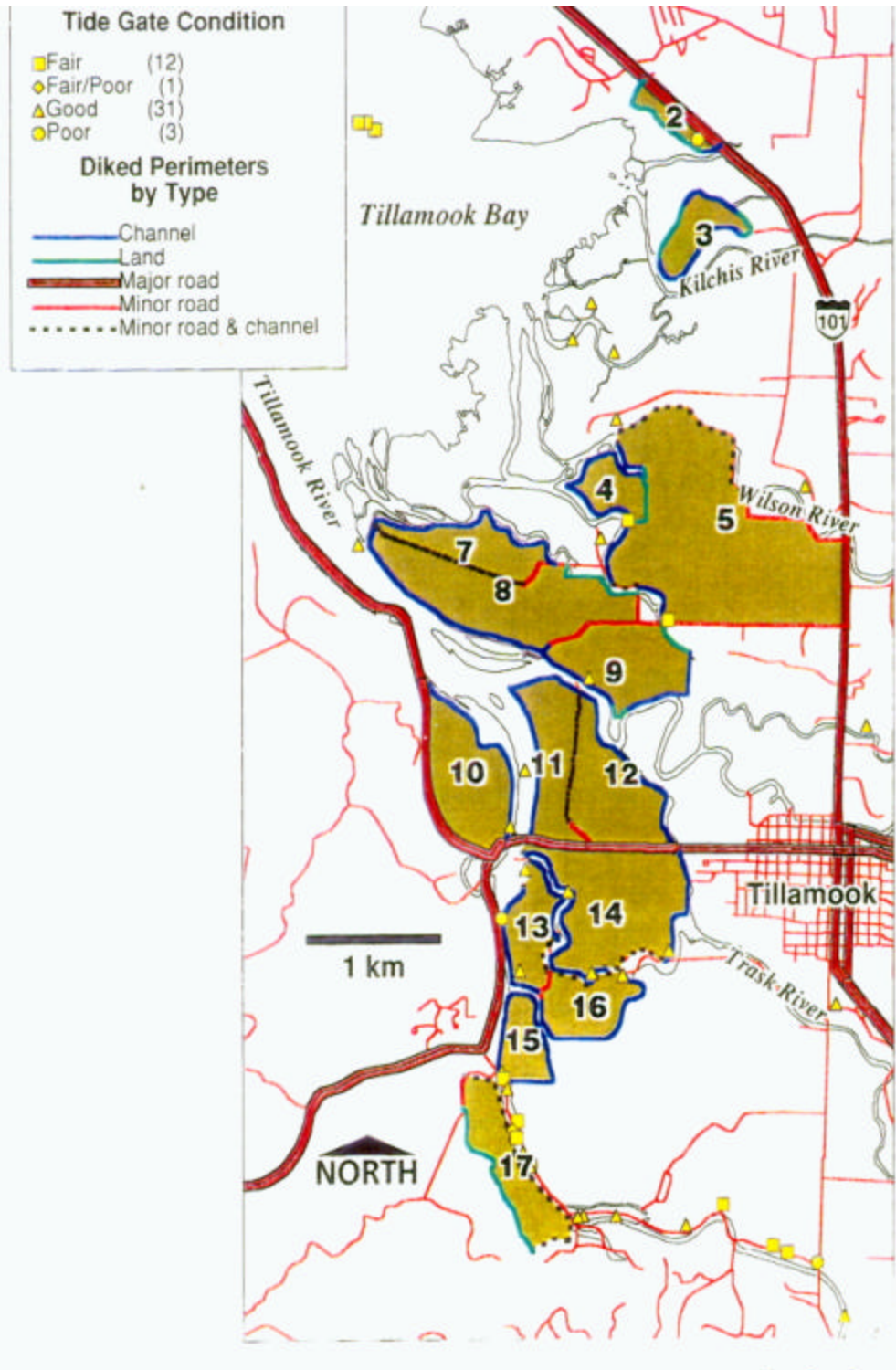
| Site Number | Site Name                    | Tillamook Bay Tributary Regions | Contiguous Site(s) |
|-------------|------------------------------|---------------------------------|--------------------|
| 1           | <i>Garibaldi-Miami River</i> | Miami River                     |                    |
| 2           | Vaughn Creek                 | Pacific Ocean                   |                    |
| 3           | Kilchis River                | Wilson & Pacific Ocean          |                    |
| 4           | Hall Slough                  | Wilson & Pacific Ocean          | #5                 |
| 5           | Wilson River                 | Wilson & Pacific Ocean          | #4                 |
| 6           | <i>Hall Slough East</i>      | Wilson                          |                    |
| 7           | Memaloose Point North        | Pacific Ocean                   | #8                 |
| 8           | Memaloose Point South        | Pacific Ocean & Trask           | #7,#9              |
| 9           | Nolan Slough                 | Pacific Ocean & Trask           | #8                 |
| 10          | Tomilinson Slough            | Pacific Ocean & Tillamook       |                    |
| 11          | Tillamook North              | Tillamook & Trask               | #12                |
| 12          | Trask North                  | Trask                           | #11                |
| 13          | Tillamook Central 1          | Tillamook & Trask               | #16                |
| 14          | Trask South                  | Tillamook & Trask               |                    |
| 15          | Tillamook Central 2          | Tillamook                       |                    |
| 16          | Tillamook Iowa               | Tillamook & Trask               | #13                |
| 17          | Tillamook South              | Tillamook                       |                    |

**Table 2: Summary (normalized) scores and rankings<sup>2</sup> (in parentheses) of fifteen potential diked estuarine wetland sites for their potential contribution to restoring juvenile salmonid rearing habitat in Tillamook Bay, OR.**

| Site | Site Name             | Wetland Structure [3] | Salmonid Utilization Probability [6] | Salmonid Rearing Landscape [3] | Sum Total and Rank [12] |
|------|-----------------------|-----------------------|--------------------------------------|--------------------------------|-------------------------|
| 2    | Vaughn Creek          | 0.46 (15)             | 0.02 (14)                            | 2.42 (4)                       | 2.90 (13)               |
| 3    | Kilchis River         | 0.97 (10)             | 1.14 (12)                            | 2.46 (3)                       | 4.57 (9)                |
| 4    | Hall Slough           | 0.99 (9)              | 2.97 (2)                             | 2.55 (2)                       | 6.51 (2)                |
| 5    | Wilson River          | 2.13 (1)              | 2.07 (6)                             | 1.59 (9)                       | 5.79 (3)                |
| 7    | Memaloose Point North | 1.84 (3)              | 0 (15)                               | 2.66 (1)                       | 4.50 (10)               |
| 8    | Memaloose Point South | 1.43 (7)              | 4.57 (1)                             | 2.4 (5)                        | 8.40 (1)                |
| 9    | Nolan Slough          | 1.55 (5)              | 2.00 (7)                             | 1.89 (8)                       | 5.44 (5)                |
| 10   | Tomilinson Slough     | 1.56 (4)              | 2.11 (5)                             | 2.08 (6.5)                     | 5.75 (4)                |
| 11   | Tillamook North       | 0.91 (11)             | 2.16 (4)                             | 2.08 (6.5)                     | 5.15 (7)                |
| 12   | Trask North           | 1.52 (6)              | 1.95 (8)                             | 1.49 (10)                      | 4.96 (8)                |
| 13   | Tillamook Central 1   | 1.11 (8)              | 1.48 (9)                             | 1.27 (11)                      | 3.86 (11)               |
| 14   | Trask South           | 2.11 (2)              | 2.46 (3)                             | 0.58 (13)                      | 5.15 (6)                |
| 15   | Tillamook Central 2   | 0.82 (13)             | 1.46 (10)                            | 0.8 (12)                       | 3.08 (12)               |
| 16   | Tillamook Iowa        | 0.70 (14)             | 0.56 (13)                            | 0 (15)                         | 1.26 (15)               |
| 17   | Tillamook South       | 0.88 (12)             | 1.43 (11)                            | 0.16 (14)                      | 2.47 (14)               |

<sup>1</sup> The two sites identified by italics were not included in full assessment of potential contribution to restoration of juvenile salmonid rearing habitat.

<sup>2</sup> Ranks for tied scores were averaged. See the text and appendices A and B for details on assessment parameters; the number of parameters included in each category scores are in brackets.



**GIS map of fifteen diked estuarine wetlands at Tillamook Bay, OR. assessed as potential restoration sites for juvenile salmonid rearing habitat. Cited in Action HAB-19.**

*Source:* Simenstad, C., B. Feist, J. Morlan, and P. Williams. 1999. *Assessment of Potential Dike-Breach Restoration of Estuarine Wetlands in Tillamook Bay, Oregon.* Prepared for TBNEP. February.

**Note:** The project was not designed to provide recommendations for acquisition of specific land parcels for restoration, but rather to establish scientific and technical criteria for setting priorities to focus on developed regions of the Bay that had the highest probability for contributing to juvenile salmonid recovery if restored.