

100% Schematic Design
May 09, 2025



Sheet List

Sheet Number	Sheet Name
General	
G0.00	COVER
G0.01	PROJECT INFORMATION
G1.01	SITE PLAN
G2.01	CODE ANALYSIS
G2.02	CODE ANALYSIS 2
Civil	
C1.00	SITE PLAN
Landscape	
L-100	SITE PLAN
Architectural	
A2.01	FIRST FLOOR PLAN - OVERALL
A2.03	ROOF PLAN
A2.11	FIRST FLOOR REFLECTED CEILING PLAN
A2.21	LABS AND GARAGE ENLARGED PLAN
A2.22	OFFICES ENLARGED PLAN
A2.23	PUBLIC WING AND RESIDENCES ENLARGED PLANS
A3.01	BUILDING ELEVATIONS
A3.02	BUILDING ELEVATIONS
A4.01	BUILDING SECTIONS
A4.02	BUILDING SECTIONS
A7.00	MOUNTING HEIGHTS
A8.01	SCHEDULES
A8.02	SCHEDULES, GLAZING SYSTEM ELEVATIONS
A9.00	EXTERIOR ASSEMBLIES
A10.00	PARTITION SCHEDULE
Exhibit	
EX	TBD
Structural	
S1.00	FOUNDATION PLAN
S1.01	FIRST FLOOR PLAN
S1.02	ROOF FRAMING PLAN
Mechanical	
M2.01	FIRST FLOOR PLAN - MECHANICAL
M2.03	ROOF PLAN - MECHANICAL

Sheet Number	Sheet Name
Electrical	
E2.01	FIRST FLOOR PLAN - ELECTRICAL
E3.01	ONE LINE DIAGRAM
E4.01	TECHNOLOGY PLAN
Lighting	
EL	TBD
Plumbing	
P2.01	FIRST FLOOR PLAN - PLUMBING
Fire Protection	
FP	TBD

Owner: Tillamook Estuaries
Partnership
613 Commercial St
Garibaldi, OR 97118
(503) 322-2222

Architect: **Bearing
Architecture LLC**
215 SE 9th Avenue - Unit 303
Portland, OR 97214
(503) 487-0211

Landcape Architect: Walker | Macy
111 SW Oak St., Suite 200
Portland, OR 97204
(503) 228-3122

Interpretive & Visitor Experience:	TBD Xxxx
--	-------------

Structural Engineers: **Miller Consulting Engineers**
9600 SW Oak St., Suite 400
Portland, OR 97223
(503) 246-1250

MEP PAE Consulting
Engineers: Engineers
522 SW 5th Ave., Suite 1500
Portland, OR 97204
(503) 226-2921

Lighting Design: TBD
Xxxx

Civil and Stormwater Engineers: Humber Design Group, Inc.
110 SE Main Street, Suite 200
Portland, OR 97214
(503) 946-6690

b bearing

503) 487-0211

Consultant

Stamp

**PRELIMINARY:
NOT FOR CONSTRUCTION**

Printing	Date
100% Schematic Design	05.09.2025

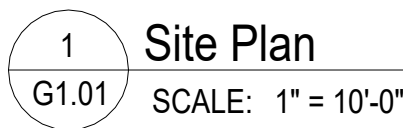
Revisions and Description	Date
---------------------------	------

[illegible]

Bearing Job Number
405

COVER

G0.00



1. See Civil and Landscape Drawings for more information.
2. Xxx.
3. Xxx.

PROJECT ADDRESS
7845 Warren St
Bay City, OR 97107

SCOPE

The project is a new lab facility with amenities including parking, outdoor gathering areas, and a community room. The lab facility contains exhibits, staff offices, labs, and related support spaces.

City of Bay City, OR
Tillamook County, OR
State of Oregon

City of Bay City Codes and Ordinances
2022 Oregon Structural Specialty Code
2022 Oregon Mechanical Specialty Code
2023 Oregon Electrical Specialty Code
2023 Oregon Plumbing Specialty Code
2025 Oregon Energy Efficiency Specialty Code

7845 Warren St
Bay City, OR 97107



Bearing Architecture LLC
2222 NE Oregon St #209
Portland, OR 97232

letstalk@bearingarchitecture.com

(503) 487-0211

Consultant

Stamp

**PRELIMINARY:
NOT FOR CONSTRUCTION**

Printing

Date _____

100% Schematic Design

05.09.202

Revisions and Description

Date _____

Scale
As indicated

Drawn by
AB

Bearing Job Number
2405

Sheet Title

SITE PLAN

Sheet Number

G1.01

CODE SUMMARY

AUTHORITY HAVING JURISDICTION City of Bay City, OR Tillamook County, OR State of Oregon
APPLICABLE CODES AND STANDARDS City of Bay City Codes and Ordinances 2022 Oregon Structural Specialty Code 2022 Oregon Mechanical Specialty Code 2023 Oregon Electrical Specialty Code 2023 Oregon Plumbing Specialty Code 2025 Oregon Energy Efficiency Specialty Code 2022 Oregon Fire Code
OCCUPANCY The building occupancies are B, S-1, and F-1 , considered non-separated per OSSC 508.3. The most restrictive allowances are used. Existing separations do exist and are maintained.
CONSTRUCTION TYPE Type IIIB Fully Sprinklered (New)
BUILDING HEIGHT AND AREA Provided: 2 Stories 27'-0" Feet High* 29,417 Square Feet Allowed**: 3 Stories Above Grade (F-1) 75 Feet High (B, F-1, S-1) 36,000 SF Allowable Area Factor (F-1, SM) *Height is further limited by AHJ, see Zoning below. **Per OSSC Tables 504.3, 504.4, and 506.2, most restrictive occupancies applied.
HAZARDOUS MATERIALS Building may contain quantities of hazardous materials in amounts not to exceed the maximum allowable quantity limits listed in Ch. 50 of the Fire code. Industry best practice and safe handling and storage techniques shall be followed.
SEPARATE PERMITS* TBD
SEPARATE PERMITS FROM FIRE MARSHALL'S OFFICE* Fire Sprinklers Fire Alarm System Underground Fire Line Fixed Extinguishing System Key Box ¹ ¹ The <i>fire code official</i> has approved the "KnoxBox" as the access key box for use in the state of Oregon. Please note that KnoxBox should be flush mounted to building to provide resistance to vandalism. See KnoxBox location at GXXX, AXXX.
DEFERRED SUBMITTALS* Fire Sprinklers Structural Supports for Mechanical Systems Prefabricated Stairs, Hand Rails, and Guards *The general contractor shall be responsible for hiring licensed professionals to design and build the system. This includes the preparation of drawings for review by the architect and for permit as needed. The separate permit documents and deferred submittal items shall not be installed until these documents have been reviewed and accepted by the architect and the AHJ.
ZONING See G1.01 for Bay City Zoning Analysis.

BUILDING ENVELOPE REQUIREMENTS FOR
NEW CONSTRUCTION ¹
CLIMATE ZONE: 4C

BUILDING ELEMENT	REQUIRED, TYPICAL ²		
Roofs Attic & Other	R-49 R-30 (Semiheated)		
Walls Above Grade Mass Steel Framed Steel Framed Bordering Semi-Heated Space	R-9.5ci NR (Semiheated) R-13 + R-7.5 c.i. R-13		
Slab-on-Grade Floors (Unheated)	R-15 for 24"		
Opaque Doors Swinging Non-swinging	U-0.37 U-0.31		
Fenestration Quantity Vertical	40% Max. Wall Area		
Vertical Fenestration³ Fixed Operable Entrance Doors	Max U-value U-0.36 U-0.45 U-0.63	Max SHGC 0.36 0.33 0.33	Min VT/SHGC 1.10 1.10 1.10
Skylights³ All Types	Max U-value U-0.50	Max SHGC 0.40	Min VT/SHGC NR

- ¹ Per ASHRAE Standard 90.1-2022.
² Minimum R-value. Maximum U-values.
³ Required values are for the full glazing assemblies.

FIRE-RESISTANCE RATINGS
FOR BUILDING ELEMENTS*

BUILDING ELEMENT	RATING (In Hours)
Primary Structural Frame	0
Bearing Walls Exterior Interior	2+ 0
Nonbearing Walls & Partitions Exterior	See Separation Distance
Nonbearing Walls & Partitions Interior	0
Floor Construction & Associated Secondary Members	0
Roof Construction & Associated Secondary Members	0

*Per OSSC Table 601

FIRE-RESISTANCE RATINGS
FOR EXTERIOR WALLS BASED ON
FIRE SEPARATION DISTANCE*

FIRE SEPARATION DISTANCE = X (feet)	TYPE OF CONSTRUCTION	REQUIRED HOURLY RATING AT OCCUPANCIES: S-1, F-1	PROVIDED HOURLY RATING:
10 < X < 30 (SEE SITE PLAN, G1.01)	IIIB	1	3 (EXISTING TILT-UP ASSEMBLY, 6" THICK, CARBONATE AGGREGATE ASSUMED)

*Per OSSC Table 705.5



1 First Floor Area Plan
G2.01 SCALE: 3/32" = 1'-0"

FIRST FLOOR PLUMBING SYSTEMS

Occupancy	Description	Occupant Load	Water Closets				Lavatories				Drinking Fountains	Showers
			Male		Female		Male		Female			
			Load Factor	Fixture...	Load Factor	Fixture...	Load Factor	Fixture...	Load Factor	Fixture...		
First Floor												
A-2	Community Room w/ Associated Kitchen	67	1 per 75	.45	1 per 75	.45	1 per 200	.17	1 per 200	.17	1 per floor	-
A-3	Exhibit Space	85	1 per 125	.34	1 per 65	.66	1 per 200	.22	1 per 200	.22	1 per floor	-
B	Offices	2	1 per 25 for the first 50 and 1 per 50 for the remainder exceeding 50	.04	1 per 25 for the first 50 and 1 per 50 for the remainder exceeding 50	.04	1 per 40 for the first 80 and 1 per 80 for the remainder exceeding 80	.03	1 per 40 for the first 80 and 1 per 80 for the remainder exceeding 80	.03	-	-
B	Commercial Labs	10	1 per 25 for the first 50 and 1 per 50 for the remainder exceeding 50	.2	1 per 25 for the first 50 and 1 per 50 for the remainder exceeding 50	.2	1 per 40 for the first 80 and 1 per 80 for the remainder exceeding 80	.13	1 per 40 for the first 80 and 1 per 80 for the remainder exceeding 80	.13	-	-
S-1	Storage	4	1 per 100	.02	1 per 100	.02	1 per 100	.02	1 per 100	.02	-	-
U	Mechanical & Garage	6									-	-
Subtotal			1.05		1.37		.57		.54		1 per floor	0
Non-gendered Fixtures Required			3 [1.05+1.37=2.42]				2 [.57+.57=1.14]				1 per floor	0
TOTAL NON-GENDERED FIXTURES...			5				5				2 per floor	1

Tillamook Estuary
Partnership

7845 Warren St
Bay City, OR 97107



Bearing Architecture LLC
2222 NE Oregon St #209
Portland, OR 97232

letstalk@bearingarchitecture.com

(503) 487-0211

Consultant

Stamp

**PRELIMINARY:
NOT FOR CONSTRUCTION**

Printing Date
100% Schematic Design 05.09.2025

Revisions and Description Date

Scale
As indicated

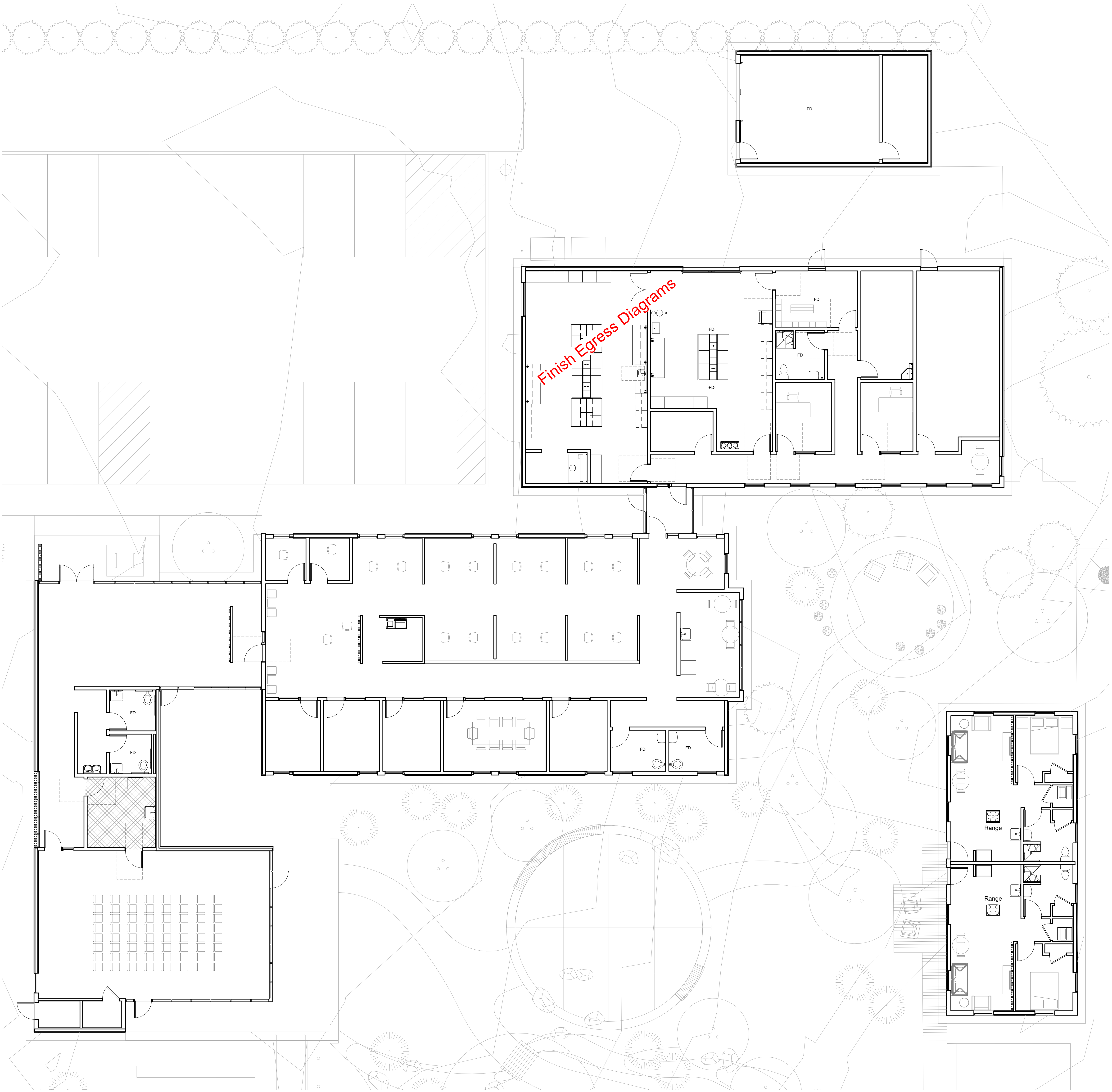
Drawn by
AH

Bearing Job Number
2405

Sheet Title
CODE ANALYSIS

Sheet Number

G2.01



1 First Floor Code Plan
G2.02 SCALE: 1/8" = 1'-0"

OCCUPANCY CALCULATIONS								
Occupancy	Level	Room Number	Room Name	Function Of Space (OSSC Table 1004.5)	Area	Load Factor	Occupant Load	Occ Load MANUAL
A-2: Assembly	First Floor	101	ANALYTICAL LAB		797 SF		0	
	First Floor	102	FIELD WORK LAB		595 SF		0	
	First Floor	103	MUD ROOM		145 SF		0	
	First Floor	104	IT		78 SF		0	
A-3: Assembly	First Floor	105	MECH / ELEC		450 SF		0	
	First Floor	106	STORAGE		176 SF		0	
	First Floor	107	LAB TOILET ROOM		72 SF		0	
	First Floor	108	LAB OFFICE 1		120 SF		0	
B: Business	First Floor	109	LAB OFFICE 2		111 SF		0	
	First Floor	110	CORRIDOR		426 SF		0	
	First Floor	111	ENTRY VESTIBULE		71 SF		0	
	First Floor	112	SEGMENTED OPEN OFFICE		1837 SF		0	
	First Floor	113	BREAK ROOM		198 SF		0	
	First Floor	116	OFFICE 4		126 SF		0	
	First Floor	117	CONFERENCE ROOM		224 SF		0	
	First Floor	118	OFFICE 3		126 SF		0	
	First Floor	119	OFFICE 2		122 SF		0	
	First Floor	120	OFFICE 1		121 SF		0	
	First Floor	121	ZOOM ROOM		54 SF		0	
	First Floor	122	ZOOM ROOM		53 SF		0	
	First Floor	123	PRINTER/STORAGE		83 SF		0	
	First Floor	124	INTERIOR LOBBY AND EXHIBITS		709 SF		0	
	First Floor	128	COMMUNITY ROOM		1067 SF		0	
	First Floor	129	RISER ROOM		36 SF		0	
S-2: Storage	First Floor	130	CORRIDOR		279 SF		0	
	First Floor	G101	UNCONDITIONED BOAT GARAGE		467 SF		0	
	First Floor	G102	UNCONDITIONED STORAGE		154 SF		0	
	First Floor	R101	UNIT 1 LIVING SPACE		320 SF		0	
U: Utility	First Floor	R102	UNIT 1 BEDROOM		109 SF		0	
	First Floor	R103	UNIT 1 RESTROOM		70 SF		0	
	First Floor	R104	UNIT 2 LIVING SPACE		320 SF		0	
	First Floor	R105	UNIT 2 BEDROOM		109 SF		0	
	First Floor	R106	UNIT 2 RESTROOM		70 SF		0	
	First Floor	x	Open Outdoor Courtyard		496 SF		0	
							1	
							1	
A-2	First Floor	127	CATERING KITCHEN	Accessory Catering Kitchen	150 SF	200	1	1

Total Occupant Load

LEGEND

Room name
101

Room Tag

FunctionOfSpace
###

Occupancy Load

Distance

Common Path of Egress Travel (CPET)

100' Maximum per OSSC 1006.2.1

Distance

Exit Access Travel Distance (EATD)

250' Maximum for S-1, F-1 per OSSC 1017.2

75' Maximum for B on 1 Story Above Grade Plane w/ 1 Exit per OSSC 3406.4.4.1.1(2)

Major Path of Travel

Occupancy Load on Path

Path of Travel

Exit sign - Ceiling Mounted

Illuminated Surface (Solid)

Direction of Arrow(s)

Exit sign - Wall Mounted

Direction of Arrow

Illuminated Surface (Solid)

Tillamook Estuary Partnership

7845 Warren St
Bay City, OR 97107

Bearing Architecture LLC
2222 NE Oregon St #209
Portland, OR 97232

letstalk@bearingarchitecture.com

(503) 487-0211

Consultant

Stamp

PRELIMINARY:
NOT FOR CONSTRUCTION

Printing Date
100% Schematic Design 05.09.2025

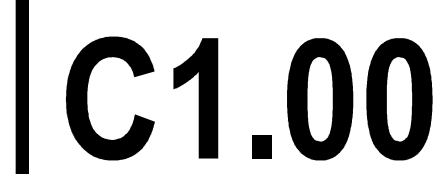
Revisions and Description Date

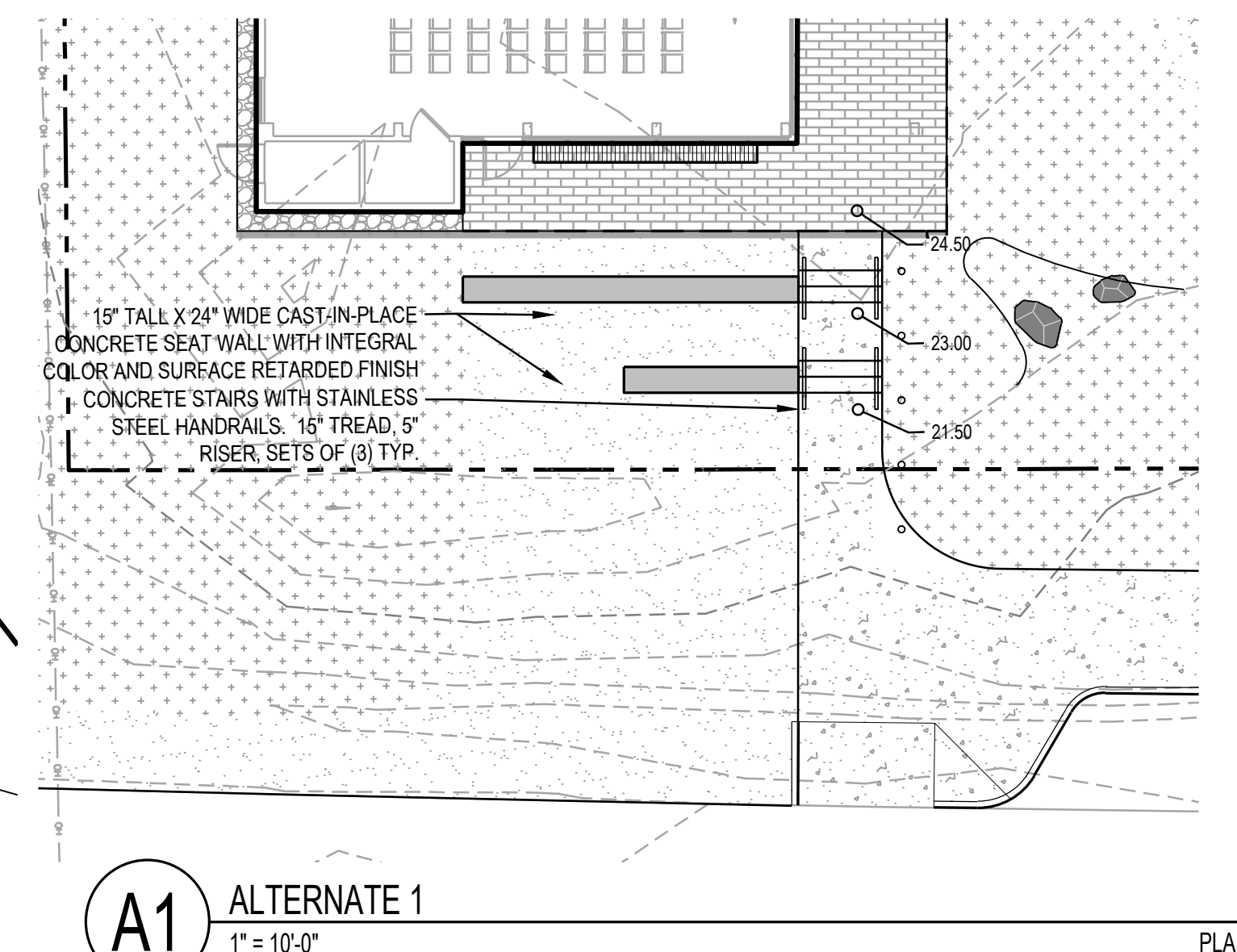
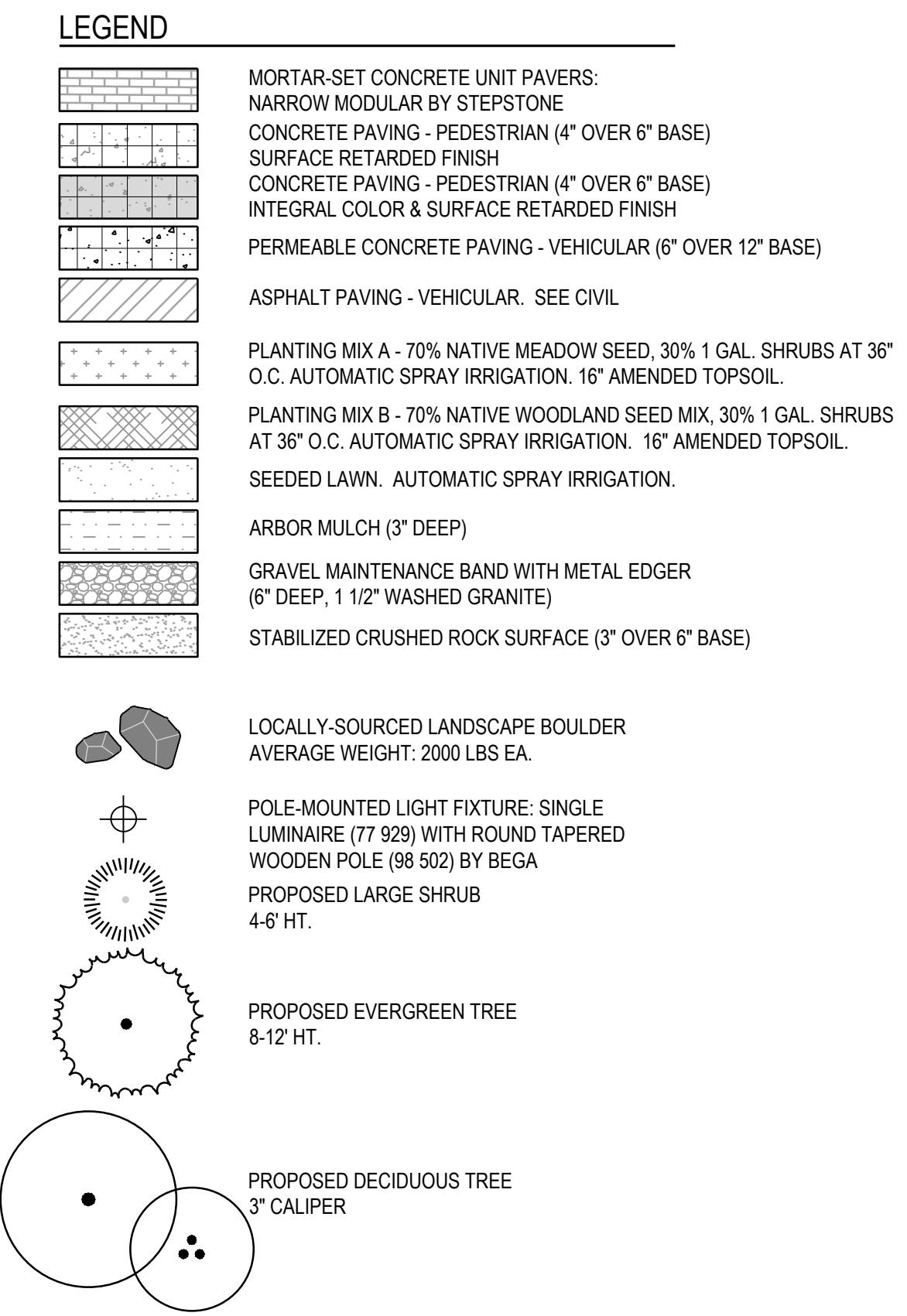
Scale
As Indicated
Drawn by
AH
Bearing Job Number
2405

Sheet Title
CODE ANALYSIS 2

Sheet Number

G2.02

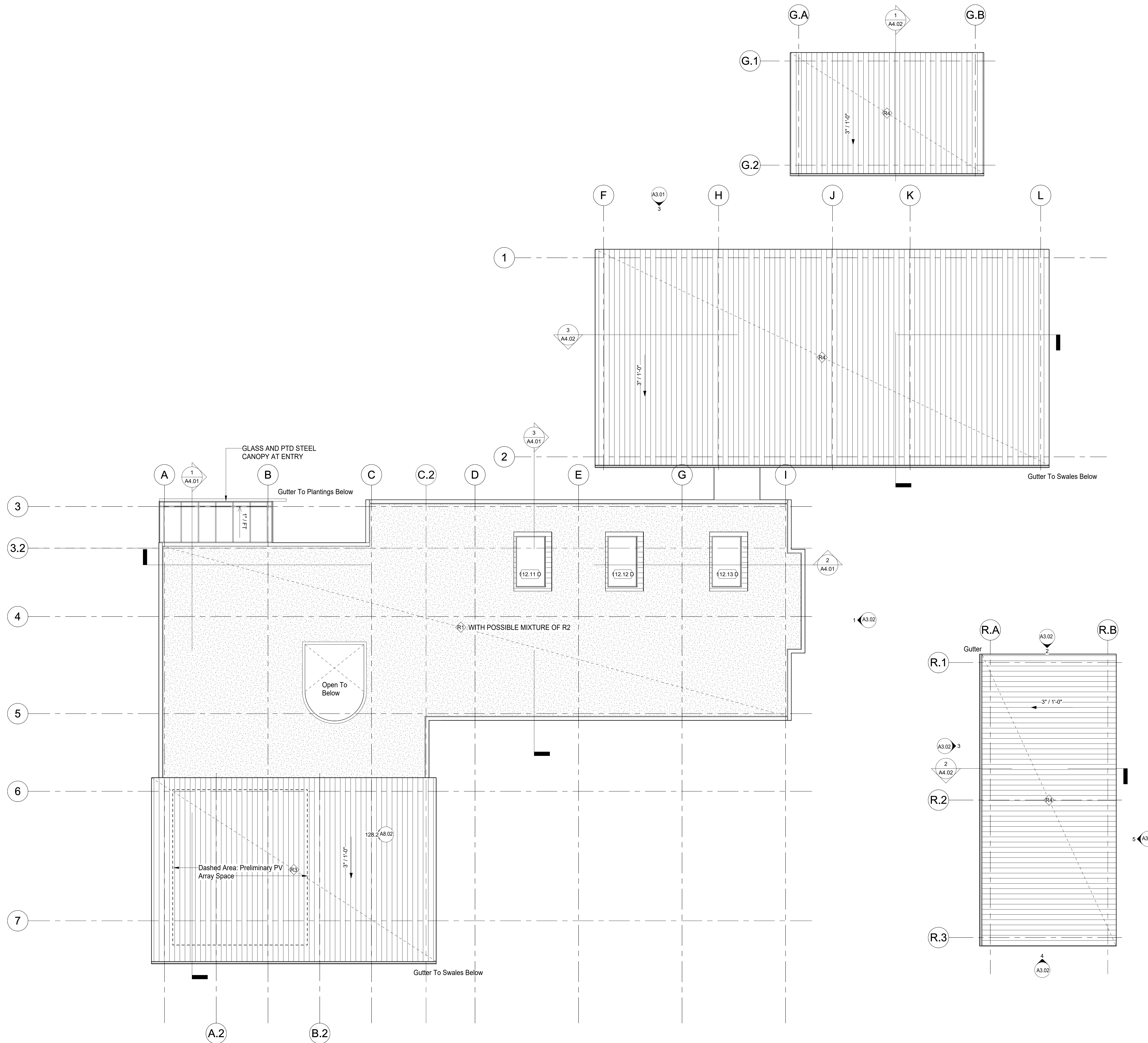





1 First Floor Plan
A2.01 SCALE: 1/8" = 1'-0"




A2.01



ROOF PLAN LEGEND

 Standing Seam Roof

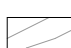
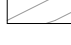




 Green Roofing System (Extensive to Semi-Intensive, TBD)

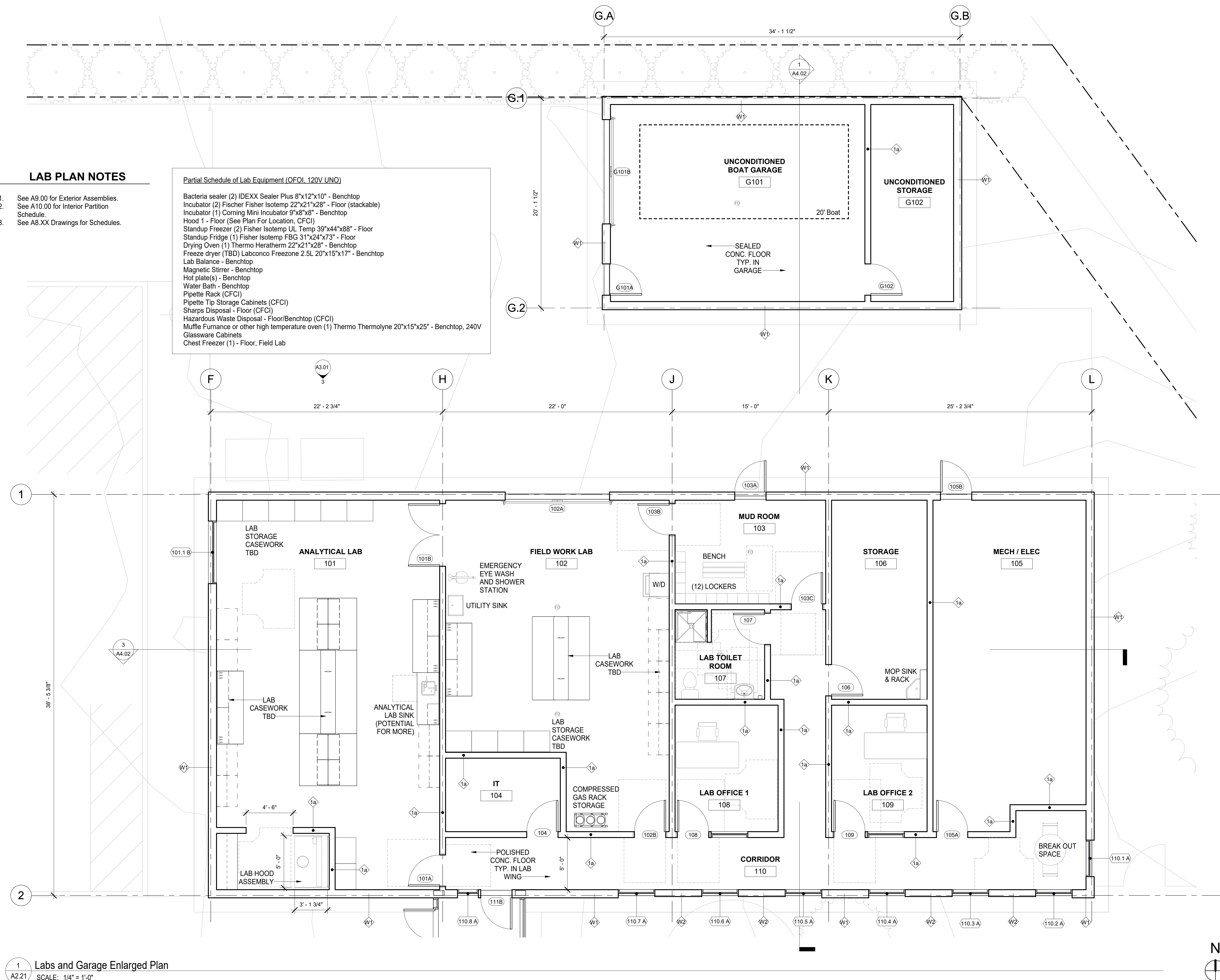
1 Roof Plan
A2.03 SCALE: 1/8" = 1'-0"

N



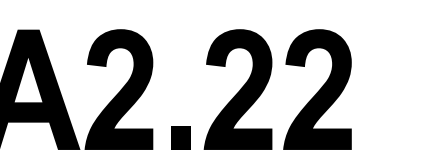
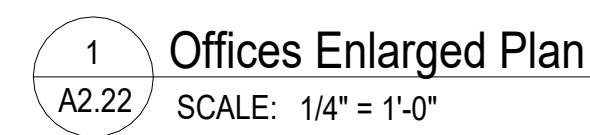
1 First Floor Reflected Ceiling Plan
A2.11 SCALE: 1/8" = 1'-0"

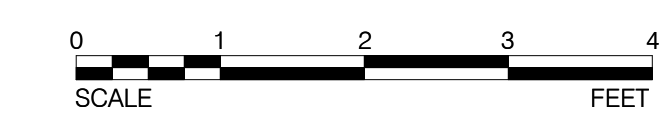
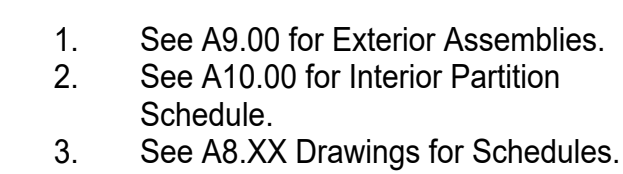
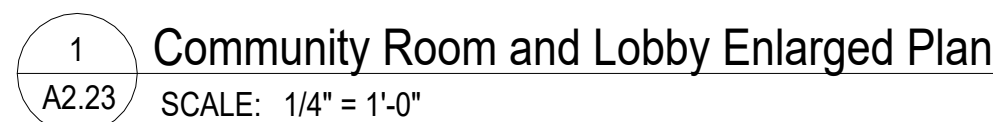
- ## CEILING LEGEND
- | | |
|---|---------------------------------|
|  | EXPOSED STRUCTURAL CLT |
|  | ACOUSTIC WOOL CEILING PANEL |
|  | METAL PANEL |
|  | PAINTED GYPSUM BOARD LID |
|  | T&G WOOD SOFFIT |
|  | 9WOOD OR SIM. PREFAB
CEILING |

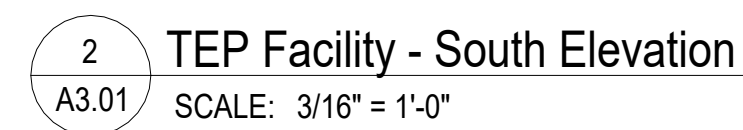
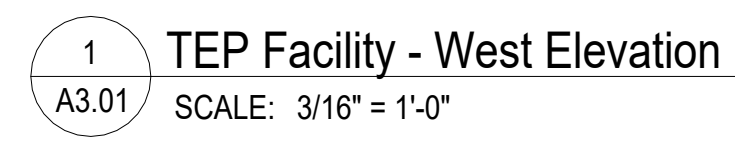
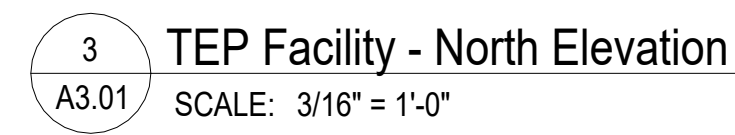


1 Labs and Garage Enlarged Plan
A2.21 SCALE: 1/4" = 1'-0"

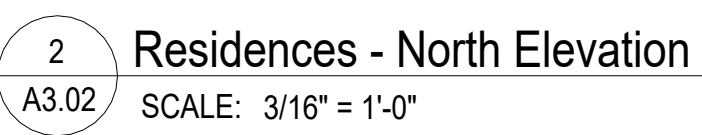
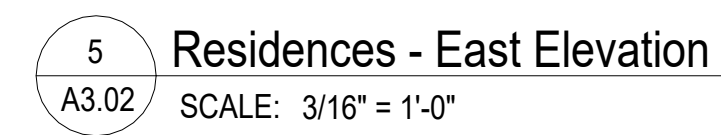
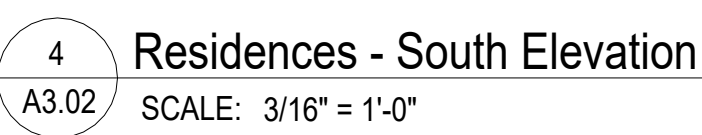
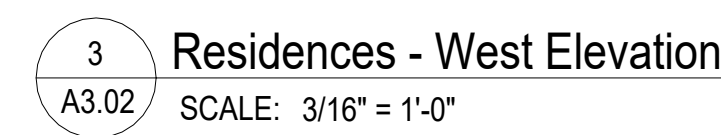
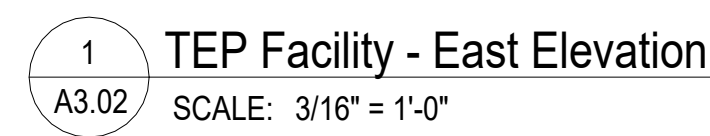
3. See A8.XX Drawings for Schedules.





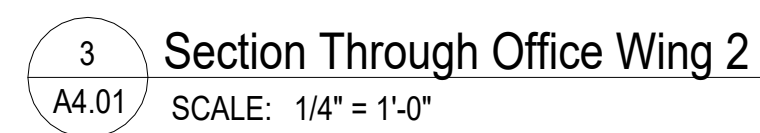
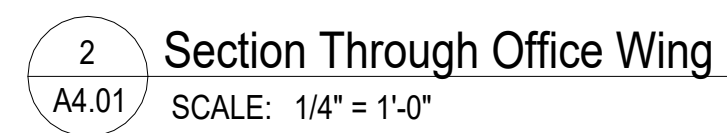
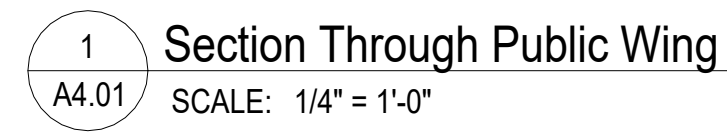


A3.01



A3.02

1. Do not scale off of Sections.



Consultant

Stamp

**PRELIMINARY:
NOT FOR CONSTRUCTION**

Printing	Date
100% Schematic Design	05.09.2025

Revisions and Description	Date
---------------------------	------

Sheet Number

A4.01



2 Section Through Residences
A4.02 SCALE: 1/4" = 1'-0"

A4.02

Stamp

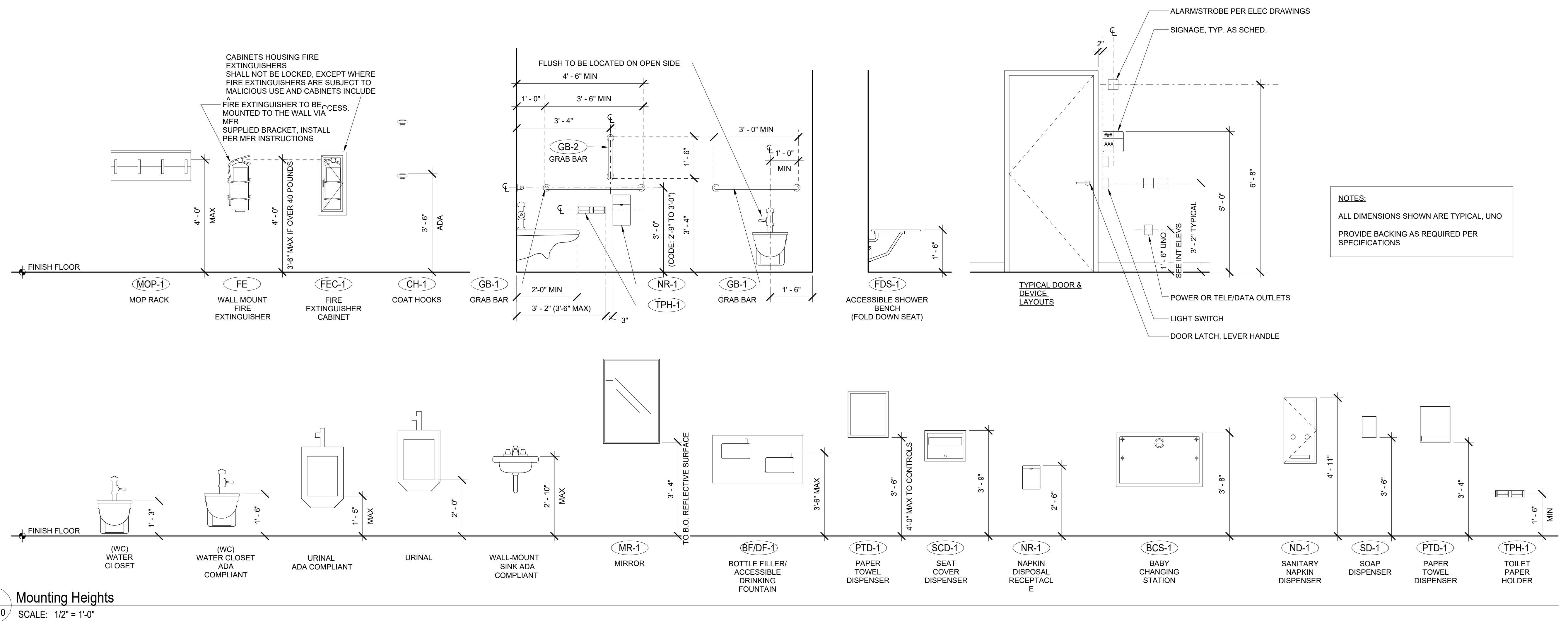
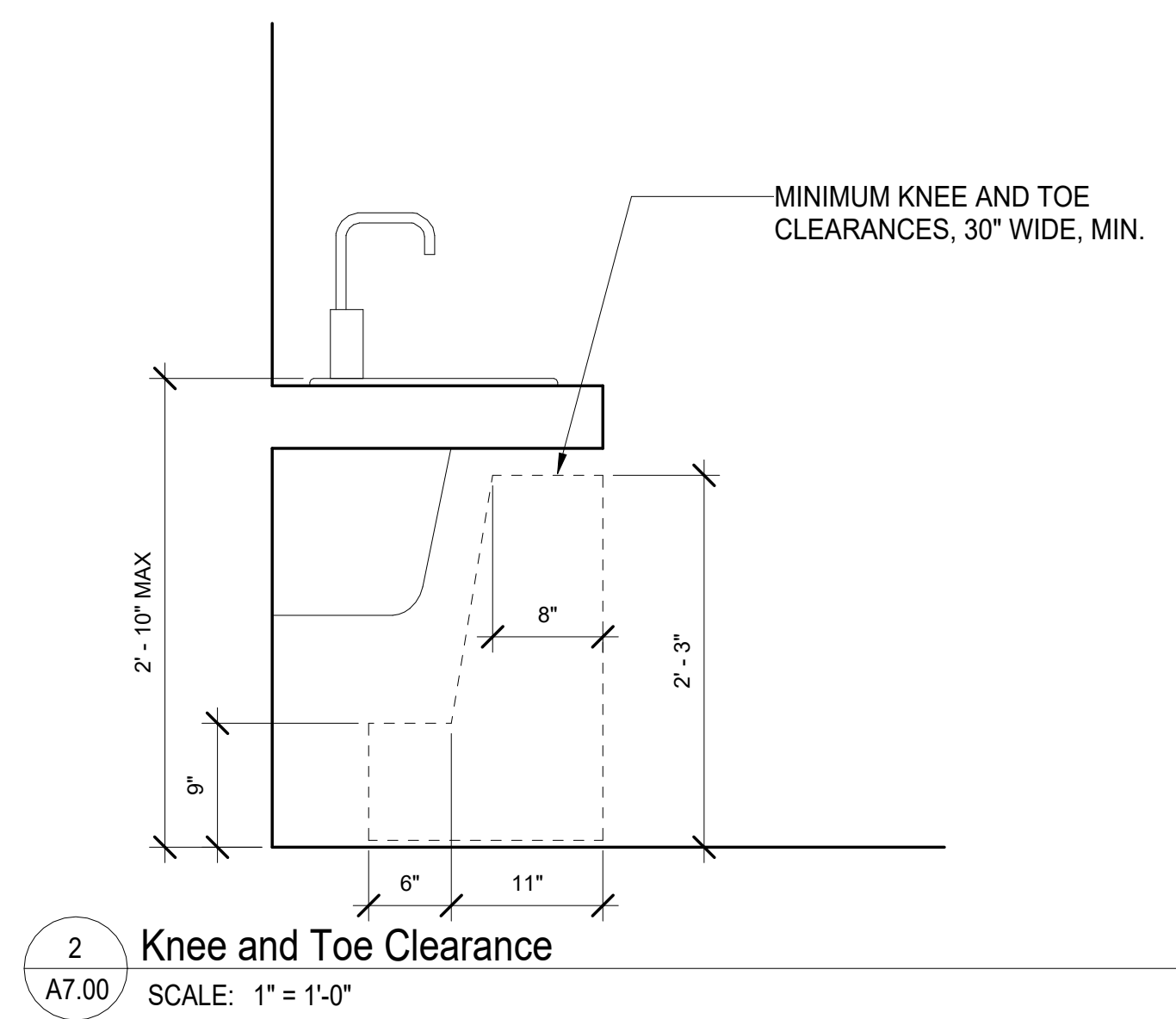
**PRELIMINARY:
NOT FOR CONSTRUCTION**

[illegible]

2405

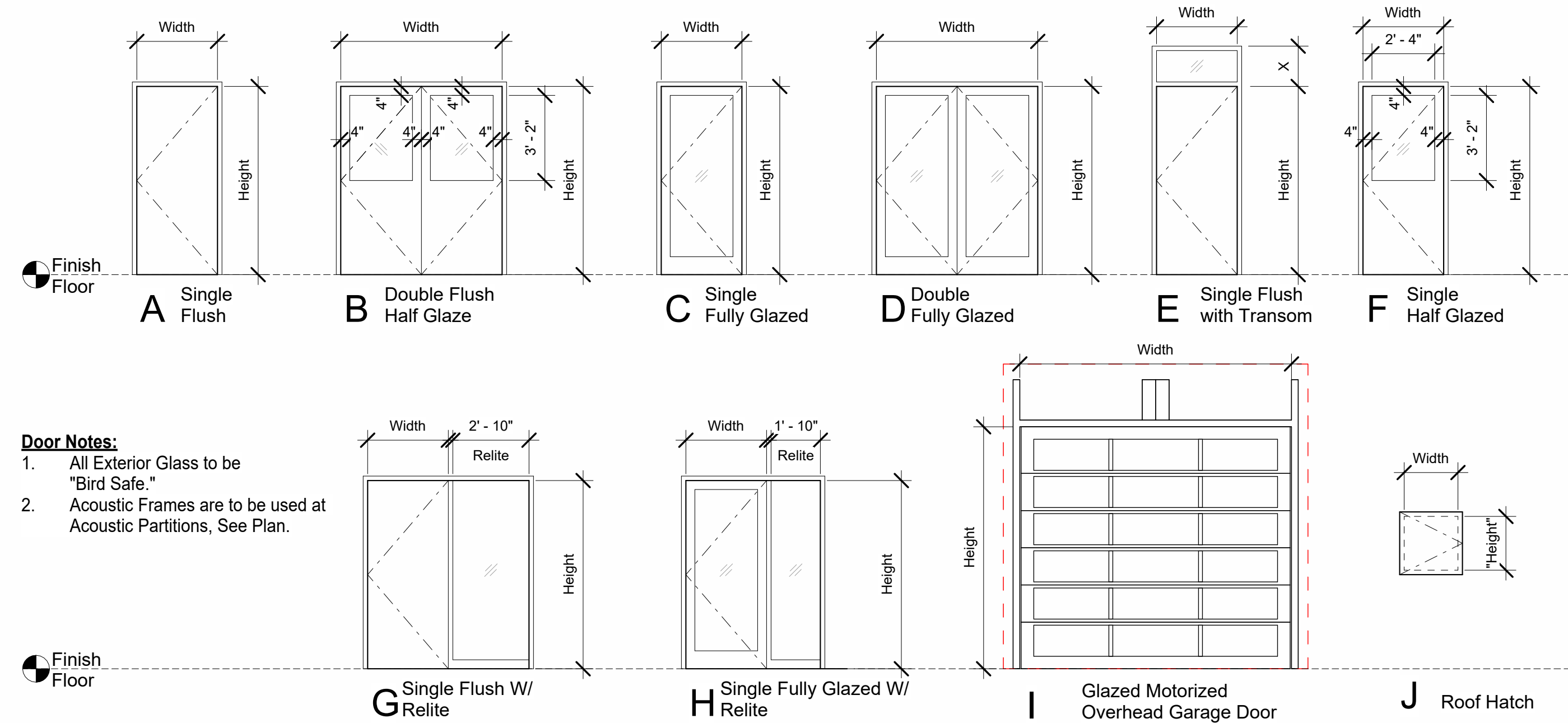
MOUNTING HEIGHTS

A7.00

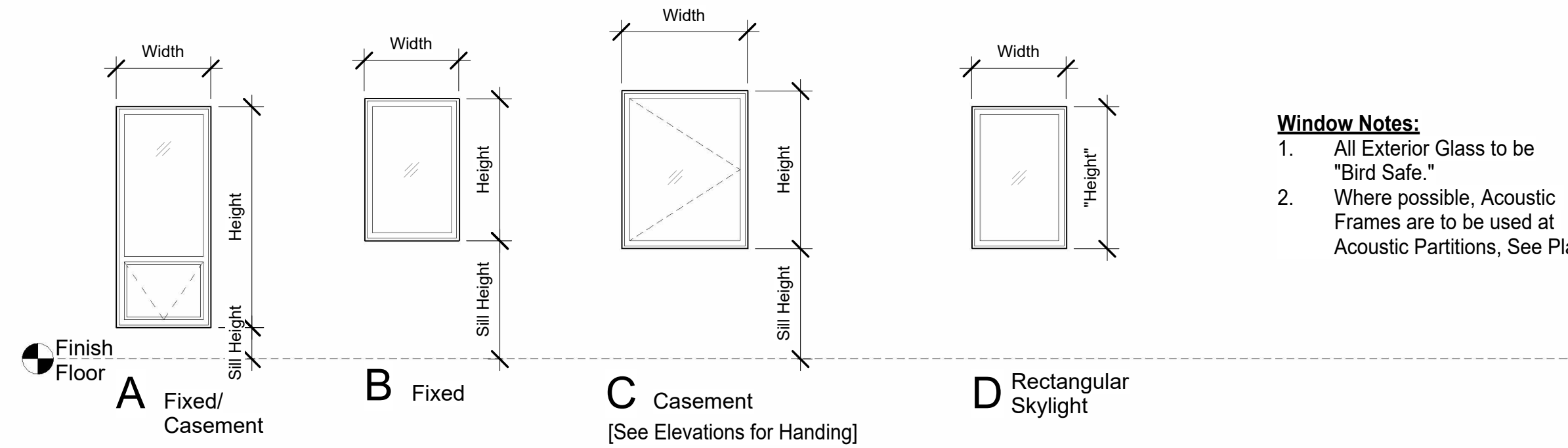


Door Schedule

Number	Type	Function	Dimensions			Door		Frame		Hardware Group	Details			Comments
			Thickness	Width	Height	Material	Finish	Material	Finish		Head	Jamb	Threshold	
101A	F	Interior	1 3/4"	3' - 0"	7' - 0"	WD	CLR	HM	PTD	TBD				
101B	B	Interior	1 3/4"	6' - 0"	7' - 0"	HM	PTD	HM	PTD	TBD				
102A	H	Exterior		10' - 0"	9' - 0"	ALUM	PTD	STL	PTD	TBD				
102B	F	Interior	1 3/4"	3' - 0"	7' - 0"	WD	CLR	HM	PTD	TBD				
103A	E	Exterior	2"	3' - 0"	7' - 0"	HM	PTD	HM	PTD	TBD				
103B	F	Interior	1 3/4"	3' - 0"	7' - 0"	HM	PTD	HM	PTD	TBD				
103C	F	Interior	1 3/4"	3' - 0"	7' - 0"	WD	CLR	HM	PTD	TBD				
104	A	Interior	2"	3' - 0"	7' - 0"	HM	PTD	HM	PTD	TBD				
105A	A	Interior	2"	3' - 0"	7' - 0"	HM	PTD	HM	PTD	TBD				
105B	A	Exterior	2"	3' - 0"	7' - 0"	HM	PTD	HM	PTD	TBD				
106	A	Interior	2"	3' - 0"	7' - 0"	HM	PTD	HM	PTD	TBD				
107	A	Interior	1 3/4"	3' - 0"	7' - 0"	WD	CLR	HM	PTD	TBD				
108	G	Interior	1 3/4"	3' - 0"	7' - 0"	WD	CLR	HM	PTD	TBD				
109	G	Interior	1 3/4"	3' - 0"	7' - 0"	WD	CLR	HM	PTD	TBD				
111A	C	Exterior		3' - 0"	7' - 0"	STOREFRONT	PTD	STOREFRONT	PTD	TBD				
111B	H	Interior	2"	3' - 0"	7' - 0"	WD	CLR	HM	PTD	TBD				
111C	H	Interior	2"	3' - 0"	7' - 0"	WD	CLR	HM	PTD	TBD				
112A	G	Interior	1 3/4"	3' - 0"	7' - 0"	WD	CLR	HM	PTD	TBD				
114	A	Interior	2"	3' - 0"	7' - 0"	WD	CLR	HM	PTD	TBD				
115	A	Interior	2"	3' - 0"	7' - 0"	WD	CLR	HM	PTD	TBD				
116	G	Interior	1 3/4"	3' - 0"	7' - 0"	WD	CLR	HM	PTD	TBD				
117	G	Interior	1 3/4"	3' - 0"	7' - 0"	WD	CLR	HM	PTD	TBD				
118	G	Interior	1 3/4"	3' - 0"	7' - 0"	WD	CLR	HM	PTD	TBD				
119	G	Interior	1 3/4"	3' - 0"	7' - 0"	WD	CLR	HM	PTD	TBD				
120	G	Interior	1 3/4"	3' - 0"	7' - 0"	WD	CLR	HM	PTD	TBD				
121	C	Interior	2"	3' - 0"	7' - 0"	WD	CLR	HM	PTD	TBD				
122	C	Interior	2"	3' - 0"	7' - 0"	WD	CLR	HM	PTD	TBD				
124A	D	Exterior		6' - 0"	7' - 0"	STOREFRONT	PTD	STOREFRONT	PTD	TBD				
124B	C	Exterior		3' - 0"	7' - 0"	STOREFRONT	PTD	STOREFRONT	PTD	TBD				
125	A	Interior	2"	3' - 0"	7' - 0"	WD	CLR	HM	PTD	TBD				
126	A	Interior	2"	3' - 0"	7' - 0"	WD	CLR	HM	PTD	TBD				
127	A	Interior	1 3/4"	3' - 0"	7' - 0"	WD	CLR	WD	CLR	TBD				
128A	H	Interior	2"	3' - 0"	7' - 0"	WD	CLR	WD	CLR	TBD				
128B	A	Interior	1 3/4"	3' - 0"	7' - 0"	WD	CLR	WD	CLR	TBD				
128C	C	Exterior		3' - 0"	7' - 0"	STOREFRONT	PTD	STOREFRONT	PTD	TBD				
128D	C	Exterior		3' - 0"	7' - 0"	STOREFRONT	PTD	STOREFRONT	PTD	TBD				
128E	A	Interior	2"	3' - 0"	7' - 0"	WD	CLR	WD	CLR	TBD				
129	A	Exterior	2"	3' - 0"	7' - 0"	WD	CLR	WD	CLR	TBD				
G101A	A	Exterior	2"	3' - 0"	7' - 0"	HM	PTD	HM	PTD	TBD				
G101B	H	Exterior		10' - 0"	9' - 0"	ALUM	PTD	STL	PTD	TBD				
G102	A	Exterior	2"	3' - 0"	7' - 0"	HM	PTD	HM	PTD	TBD				
R101A	C	Exterior	2"	3' - 0"	7' - 0"	WD	CLR	WD	CLR	TBD				
R101B	A	Interior	2"	3' - 0"	7' - 0"	WD	CLR	WD	CLR	TBD				
R102A	A	Interior	1 3/4"	3' - 0"	7' - 0"	WD	CLR	WD	CLR	TBD				
R102B	A	Interior	2"	3' - 0"	7' - 0"	WD	CLR	WD	CLR	TBD				
R103A	A	Interior	2"	3' - 0"	7' - 0"	WD	CLR	WD	CLR	TBD				
R103B	A	Interior	2"	3' - 0"	7' - 0"	WD	CLR	WD	CLR	TBD				
R104A	C	Exterior	2"	3' - 0"	7' - 0"	WD	CLR	WD	CLR	TBD				
R104B	A	Interior	2"	3' - 0"	7' - 0"	WD	CLR	WD	CLR	TBD				
R105A	A	Interior	1 3/4"	3' - 0"	7' - 0"	WD	CLR	WD	CLR	TBD				
R105B	A	Interior	2"	3' - 0"	7' - 0"	WD	CLR	WD	CLR	TBD				
R106A	A	Interior	2"	3' - 0"	7' - 0"	WD	CLR	WD	CLR	TBD				
R106B	A	Interior	2"	3' - 0"	7' - 0"	WD	CLR	WD	CLR	TBD				



Door Legend
1/4" = 1'-0"



Window Notes:
1. All Exterior Glass to be "Bird Safe."
2. Where possible, Acoustic Frames are to be used at Acoustic Partitions, See Plan.

Window Legend
1/4" = 1'-0"

Window Schedule

Number	Type	Operation	Dimensions			Frame		Glazing		Window Coverings	Details			Comments
			Width	Height	Sill Height	Material	Finish	Thickness	Type		Head	Jamb	Sill	
101.1	B	Fixed	6' - 0"	6' - 0"	3' - 7 1/2"	MTL	PTD							
101.2	B	Fixed	4' - 0"	4' - 0"	14' - 0"	MTL	PTD							
101.3	B	Fixed	4' - 0"	4' - 0"	14' - 0"	MTL	PTD							
101.4	B	Fixed	4' - 0"	4' - 0"	14' - 0"	MTL	PTD							
102.1	B	Fixed	4' - 0"	4' - 0"	14' - 0"	MTL	PTD							
102.2	B	Fixed	4' - 0"	4' - 0"	14' - 0"	MTL	PTD							
102.3	B	Fixed	4' - 0"	4' - 0"	14' - 0"	MTL	PTD							
110.1	A	Casement	3' - 6"	8' - 7 1/2"	1' - 0"	MTL	PTD							
110.2	A	Casement	3' - 6"	8' - 7 1/2"	1' - 0"	MTL	PTD							
110.3	A	Casement	3' - 6"	8' - 7 1/2"	1' - 0"	MTL	PTD							
110.4	A	Casement	3' - 6"	8' - 7 1/2"	1' - 0"	MTL	PTD							
110.5	A	Casement	3' - 6"	8' - 7 1/2"	1' - 0"	MTL	PTD							
110.6	A	Casement	3' - 6"	8' - 7 1/2"	1' - 0"	MTL	PTD							
110.7	A	Casement	3' - 6"	8' - 7 1/2"	1' - 0"	MTL	PTD							
112.1	A	Casement	3' - 6"	8' - 7 1/2"	1' - 0"	MTL	PTD							
112.2	A	Casement	3' - 6"	8' - 7 1/2"	1' - 0"	MTL	PTD							
112.3	A	Casement	3' - 6"	8' - 7 1/2"	1' - 0"	MTL	PTD							
112.4	A	Casement	3' - 6"	8' - 7 1/2"	1' - 0"	MTL	PTD							
112.5	A	Casement	3' - 6"	8' - 7 1/2"	1' - 0"	MTL	PTD							
112.6	A	Casement	3' - 6"	8' - 7 1/2"	1' - 0"	MTL	PTD							
112.7	A	Casement	3' - 6"	8' - 7 1/2"	1' - 0"	MTL	PTD							
112.8	A	Casement	3' - 6"	8' - 7 1/2"	1' - 0"	MTL	PTD							
112.11	D		9' - 6 5/16"	5' - 6 5/16"		MTL	PTD							
112.12	D		9' - 6 5/16"	5' - 6 5/16"		MTL	PTD							
112.13	D		9' - 6 5/16"	5' - 6 5/16"		MTL	PTD							
114.1	A	Casement	3' - 6"	8' - 7 1/2"	1' - 0"	MTL	PTD			FROSTED				
115.1	A	Casement	3' - 6"	8' - 7 1/2"	1' - 0"	MTL	PTD			FROSTED				
116.1	A	Casement	3' - 6"	8' - 7 1/2"	1' - 0"	MTL	PTD							
117.1	B	Fixed	3' - 6"	5' - 2"	3' - 0"	MTL	PTD							
117.2	A	Casement	3' - 6"	8' - 7 1/2"	1' - 0"	MTL	PTD							
117.3	A	Casement	3' - 6"	8' - 7 1/2"	1' - 0"	MTL	PTD							
118.1	A	Casement	3' - 6"	8' - 7 1/2"	1' - 0"	MTL	PTD							
119.1	A	Casement	3' - 6"	8' - 7 1/2"	1' - 0"	MTL	PTD							
120.1	A	Casement	3' - 6"	8' - 7 1/2"	1' - 0"	MTL	PTD							
121.1	A	Casement	3' - 6"	8' - 7 1/2"	1' - 0"	MTL	PTD							
128.1	B	Fixed	3' - 6"	8' - 7 1/2"	1' - 0"	MTL	PTD							
R101.1	C	Casement	3' - 6"	5' - 0"	3' - 0"	VD	CLR							
R101.2	C	Casement	3' - 6"	5' - 0"	3' - 0"	VD	CLR							
R101.3	C	Casement	3' - 6"	5' - 0"	3' - 0"	VD	CLR							
R102.1	C	Casement	3' - 6"	5' - 0"	3' - 0"	VD	CLR							
R102.2	C	Casement	3' - 6"	5' - 0"	3' - 0"	VD	CLR							
R103.1	C	Casement	3' - 6"	5' - 0"	3' - 0"	VD	CLR							
R104.1	C	Casement	3' - 6"	5' - 0"	3' - 0"	VD	CLR							
R104.2	C	Casement	3' - 6"	5' - 0"	3' - 0"	VD	CLR							
R104.3	C	Casement	3' - 6"	5' - 0"	3' - 0"	VD	CLR							
R105.1	C	Casement	3' - 6"	5' - 0"	3' - 0"	VD	CLR							
R105.2	C	Casement	3' - 6"	5' - 0"	3' - 0"	VD	CLR							
R106.1	C	Casement	3' - 6"	5' - 0"	3' - 0"	VD	CLR							

Tillamook Estuary Partnership

7845 Warren St
Bay City, OR 97107



Bearing Architecture LLC
2222 NE Oregon St #209
Portland, OR 97232

letsstalk@bearingarchitecture.com

(503) 487-0211

Consultant

Stamp

PRELIMINARY:
NOT FOR CONSTRUCTION

Printing Date
100% Schematic Design 05.09.2025

Revisions and Description Date

Scale
1/4" = 1'-0"

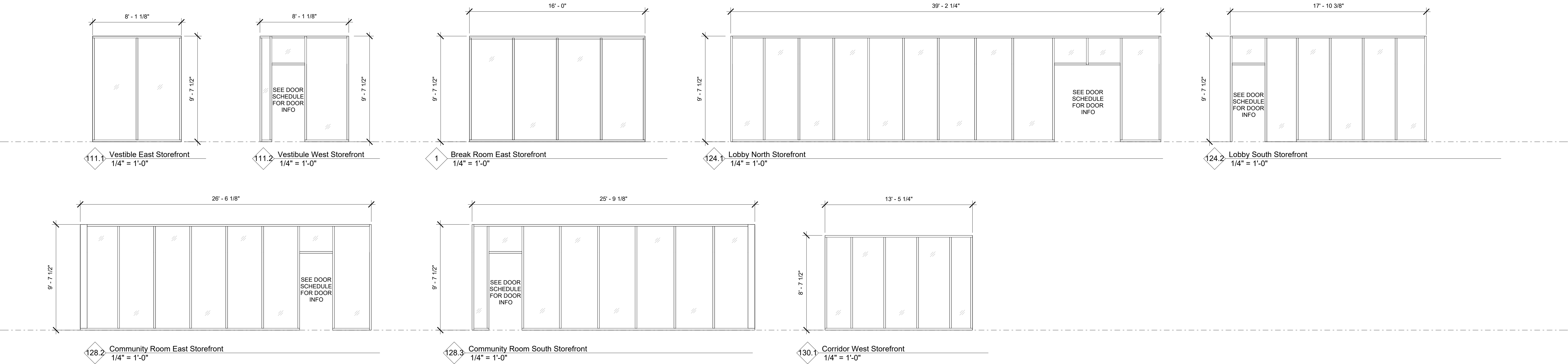
Drawn by
AH

Bearing Job Number
2405

Sheet Title
SCHEDULES

Sheet Number

A8.01



Storefronts
1/4" = 1'-0"

Material and Finish Legend

Abbreviation	Description	Color, Size, Pattern, Finish	Manufacturer	Model	Notes
BASE-1	6" Vinyl Base	Charcoal			
BASE-2	6" Wood Base	Clear Finish			
BASE-3	6" Tile Base	Grey			
CG-1	Suspended Gypsum Ceiling	USG or similar brand.			
CG-2	Suspended Lab Grade ACT	USG or similar brand.			
CG-3	Exposed Heavy Timber Deck and Beams	Clear Finish			
CG-4	9Wood or Sim. Engineered Wood Cloud Product				
CG-5	6" T&G Cedar	Clear Finish			
CONC-1	Polished Cast In Place Concrete				
CPT-1	New Carpet	TBD			
GWB-1	Gypsum Wall Board	5/8" Thick, Painted UNO. Finish Level 4 UNO.			
SF-1	Storefront System	Trifab Versaglaze 451, Basis of Design			
TILE-1	New Restroom Floor Tile	Grey			
TILE-2	New Restroom Wall Tile	White			
WD-1	Exposed Heavy Timber Deck and Beams				
WD-2	Residential Wood Flooring	Composite Wood Flooring			
WD-3	Interior Sheet Wood Wall Finish	Clear Finish			

Material and Finish Legend Notes:
1. See XXXX for more information.
2. See Partitions on Sheet A10.00

Finish Schedule

Room Number	Room Name	Floor	Base	Wall				Ceiling Finish	Comments
				North	East	South	West		
101	ANALYTICAL LAB	CONC-1	BASE-1	GWB-1	GWB-1	GWB-1	GWB-1	CG-2	
102	FIELD WORK LAB	CONC-1	BASE-1	GWB-1	GWB-1	GWB-1	GWB-1	CG-2	
103	MUD ROOM	CONC-1	BASE-1	GWB-1	GWB-1	GWB-1	GWB-1	CG-1	
104	IT	CONC-1	BASE-1	GWB-1	GWB-1	GWB-1	GWB-1	CG-1	
105	MECH / ELEC	CONC-1	BASE-1	GWB-1	GWB-1	GWB-1	GWB-1	CG-1	
106	STORAGE	CONC-1	BASE-1	GWB-1	GWB-1	GWB-1	GWB-1	CG-1	
107	LAB TOILET ROOM	TILE-1	BASE-3	GWB-1/TILE-2	GWB-1/TILE-2	GWB-1/TILE-2	GWB-1/TILE-2	CG-1	
108	LAB OFFICE 1	CONC-1	BASE-1	GWB-1	GWB-1	GWB-1	GWB-1	CG-1	
109	LAB OFFICE 2	CONC-1	BASE-1	GWB-1	GWB-1	GWB-1	GWB-1	CG-1	
110	CORRIDOR	CONC-1	BASE-1	GWB-1	GWB-1	GWB-1	GWB-1	CG-4	
111	ENTRY VESTIBULE	CONC-1	BASE-2	GWB-1	SF-1	GWB-1	SF-1	CG-5	
112	SEGMENTED OPEN OFFICE	CONC-1	BASE-2	GWB-1	GWB-1	GWB-1	GWB-1	CG-3	
113	BREAK ROOM	CONC-1	BASE-2	GWB-1	GWB-1/SF-1	GWB-1	GWB-1	CG-3	
114	TOILET ROOM 4	TILE-1	BASE-3	GWB-1/TILE-2	GWB-1/TILE-2	GWB-1/TILE-2	GWB-1/TILE-2	CG-1	
115	TOILET ROOM 3	TILE-1	BASE-3	GWB-1/TILE-2	GWB-1/TILE-2	GWB-1/TILE-2	GWB-1/TILE-2	CG-1	
116	OFFICE 4	CPT-1	BASE-2	GWB-1	GWB-1	GWB-1	GWB-1	CG-3	
117	CONFERENCE ROOM	CPT-1	BASE-2	GWB-1	GWB-1	GWB-1	GWB-1	CG-3	
118	OFFICE 3	CPT-1	BASE-2	GWB-1	GWB-1	GWB-1	GWB-1	CG-3	
119	OFFICE 2	CPT-1	BASE-2	GWB-1	GWB-1	GWB-1	GWB-1	CG-3	
120	OFFICE 1	CPT-1	BASE-2	GWB-1	GWB-1	GWB-1	GWB-1	CG-3	
121	ZOOM ROOM	CPT-1	BASE-2	GWB-1	GWB-1	GWB-1	GWB-1	CG-3	

Finish Schedule

Room Number	Room Name	Floor	Base	Wall				Ceiling Finish	Comments
				North	East	South	West		
122	ZOOM ROOM	CPT-1	BASE-2	GWB-1	GWB-1	GWB-1	GWB-1	CG-3	
123	PRINTER/STORAGE	CONC-1	BASE-2	GWB-1	GWB-1	GWB-1	GWB-1	CG-3	
124	INTERIOR LOBBY AND EXHIBITS	CONC-1	BASE-2	GWB-1/WD-3/SF-1	GWB-1/WD-3	GWB-1/WD-3/SF-1	GWB-1/WD-3	CG-3	
125	TOILET ROOM 1	TILE-1	TILE	TILE/GYP-1	TILE/GYP-1	TILE/GYP-1	TILE/GYP-1	CG-1	
126	TOILET ROOM 2	TILE-1	TILE	TILE/GYP-1	TILE/GYP-1	TILE/GYP-1	TILE/GYP-1-1	CG-1	
127	CATERING KITCHEN	CONC-1	BASE-1	GWB-1	GYP-1	GYP-1	GYP-1	CG-1	
128	COMMUNITY ROOM	CONC-1	BASE-2	GWB-1/WD-3	GWB-1/WD-3/SF-1	GWB-1/WD-3/SF-1	GWB-1/WD-3	CG-3	
129	RISER ROOM	CONC-1	BASE-1	GWB-1	GWB-1	GWB-1	GWB-1	CG-1	
130	CORRIDOR	CONC-1	BASE-2	GWB-1/WD-3	GWB-1/WD-3	GWB-1/WD-3	GWB-1/WD-3/SF-1	CG-3	
G101	UNCONDITIONED BOAT GARAGE	CONC-1	BASE-1	GWB-1	GWB-1	GWB-1	GWB-1	CG-1	
G102	UNCONDITIONED STORAGE	CONC-1	BASE-1	GWB-1	GWB-1	GWB-1	GWB-1	CG-1	
R101	UNIT 1 LIVING SPACE	CPT-1/WD-2	BASE-2	GWB-1	GWB-1	GWB-1	GWB-1	CG-1	
R102	UNIT 1 BEDROOM	CPT-1	BASE-2	GWB-1	GWB-1	GWB-1	GWB-1	CG-1	
R103	UNIT 1 RESTROOM	TILE-1	BASE-3	GWB-1/TILE-2	GWB-1/TILE-2	GWB-1/TILE-2	GWB-1/TILE-2	CG-1	
R104	UNIT 2 LIVING SPACE	CPT-1/WD-2	BASE-2	GWB-1	GWB-1	GWB-1	GWB-1	CG-1	
R105	UNIT 2 BEDROOM	CPT-1	BASE-2	GWB-1	GWB-1	GWB-1	GWB-1	CG-1	
R106	UNIT 2 RESTROOM	TILE-1	BASE-3	GWB-1/TILE-2	GWB-1/TILE-2	GWB-1/TILE-2	GWB-1/TILE-2	CG-1	

Finish Schedule Notes:
1. See XXXX for more information.
2. Satin Finish Paint, UNO.

Tillamook Estuary Partnership

7845 Warren St
Bay City, OR 97107



Bearing Architecture LLC
2222 NE Oregon St #209
Portland, OR 97232

letstalk@bearingarchitecture.com

(503) 487-0211

Consultant

Stamp

PRELIMINARY:
NOT FOR CONSTRUCTION

Printing Date
100% Schematic Design 05.09.2025

Revisions and Description Date

Scale
1/4" = 1'-0"

Drawn by
AH

Bearing Job Number
2405

Sheet Title

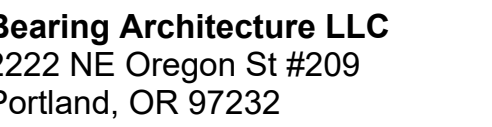
SCHEDULES,
GLAZING SYSTEM
ELEVATIONS

Sheet Number

A8.02



845 Warren St
Bay City, OR 97107



etstalk@bearingarchitecture.com

503) 487-0211

Consultant

Stamp

**PRELIMINARY:
NOT FOR CONSTRUCTION**

Printing	Date
100% Schematic Design	05.09.2025

[illegible]

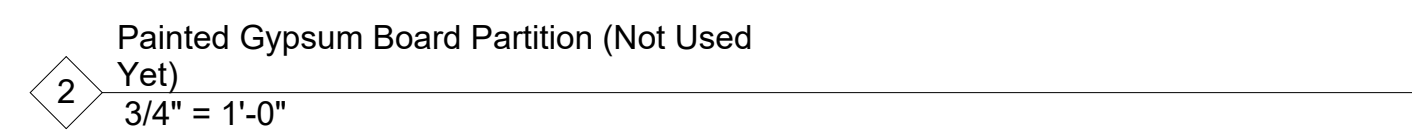
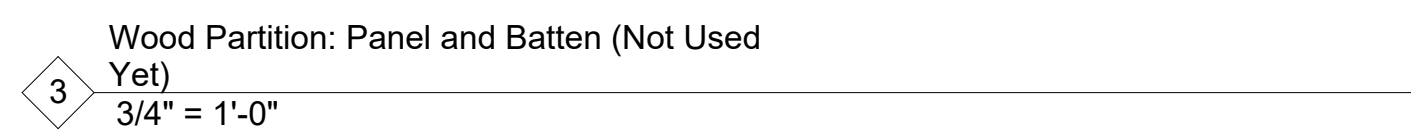
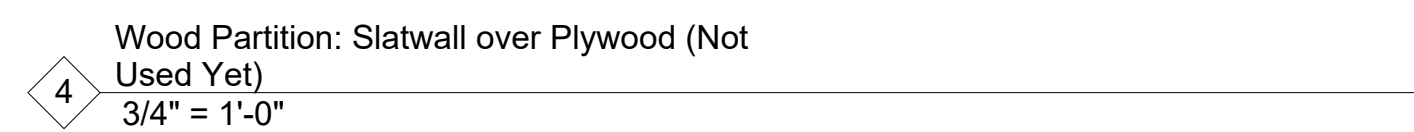
Scale
3/4" = 1'-0"
Drawn by
AH
Bearing Job No.
405

Sheet Title

PARTITION SCHEDULE

Sheet Number

A10.00





1. All sizes preliminary
2. Alternate framing - switch to MPL beams and columns would result in no change in column size but ~20% depth increase from GLB sizes shown.
3. All exterior and interior walls to be 2x wood studs

CONCRETE FOUNDATION WALL SCHEDULE				
TYPE MARK	THICKNESS	REINFORCING		NOTES
CW6	0'-6"	VERT	-	-
		HORIZ	-	
		VERT		
		HORIZ		
		VERT		
		HORIZ		

PRELIMINARY -
NOT FOR
CONSTRUCTION

[illegible]

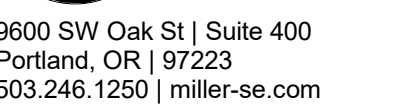
\$1.00

1. All sizes preliminary
2. Alternate framing - switch to MPL beams and columns would result in no change in column size but ~20% depth increase from GLB sizes shown.
3. All exterior and interior walls to be 2x wood studs

7845 Warren St
Bay City, OR 97107



Consultant



► MILLER CONSULTING ENGINEERS

Stamp

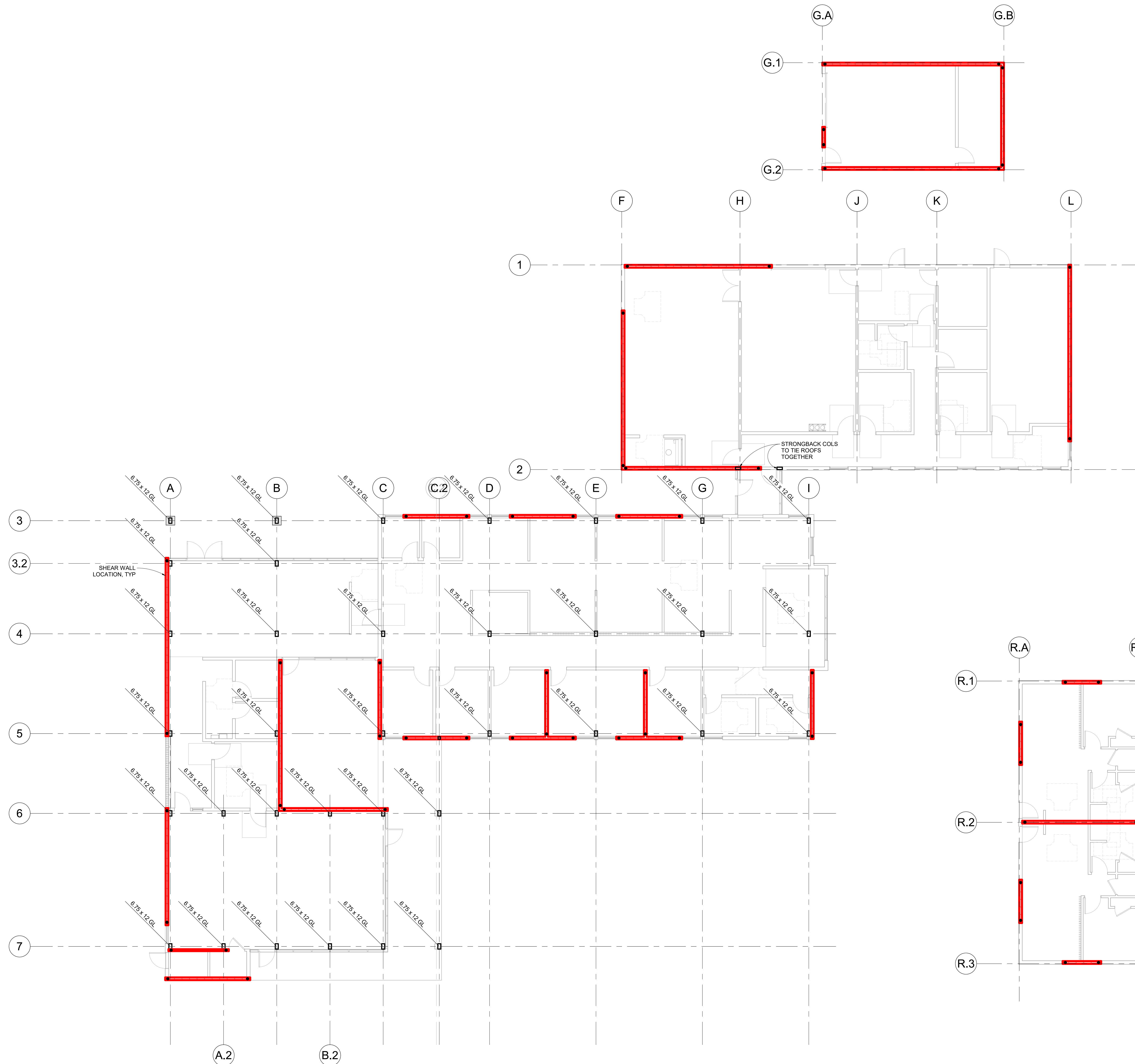
PRELIMINARY -
NOT FOR
CONSTRUCTION

[illegible]

Sheet Title

FIRST FLOOR PLAN

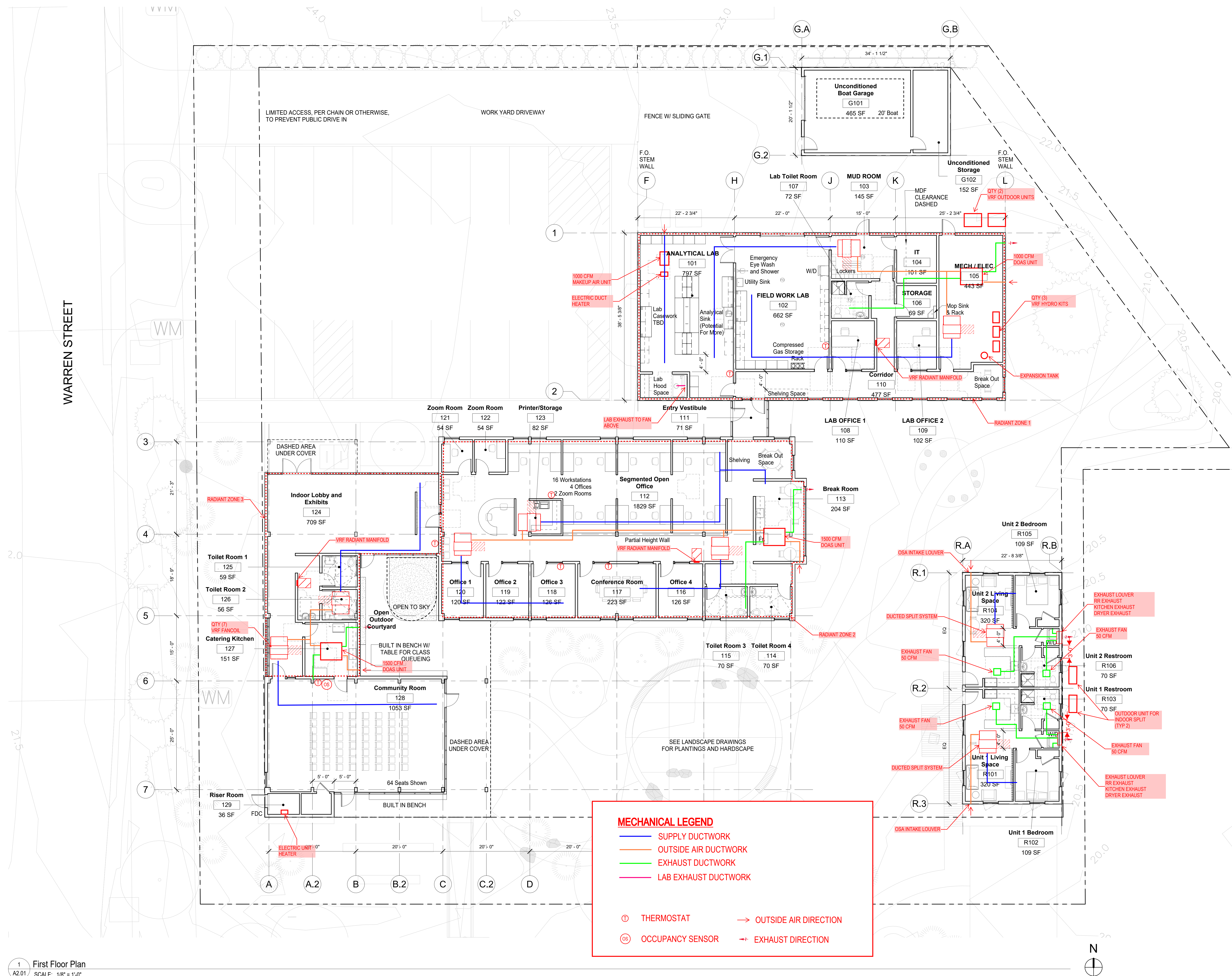
S1.01

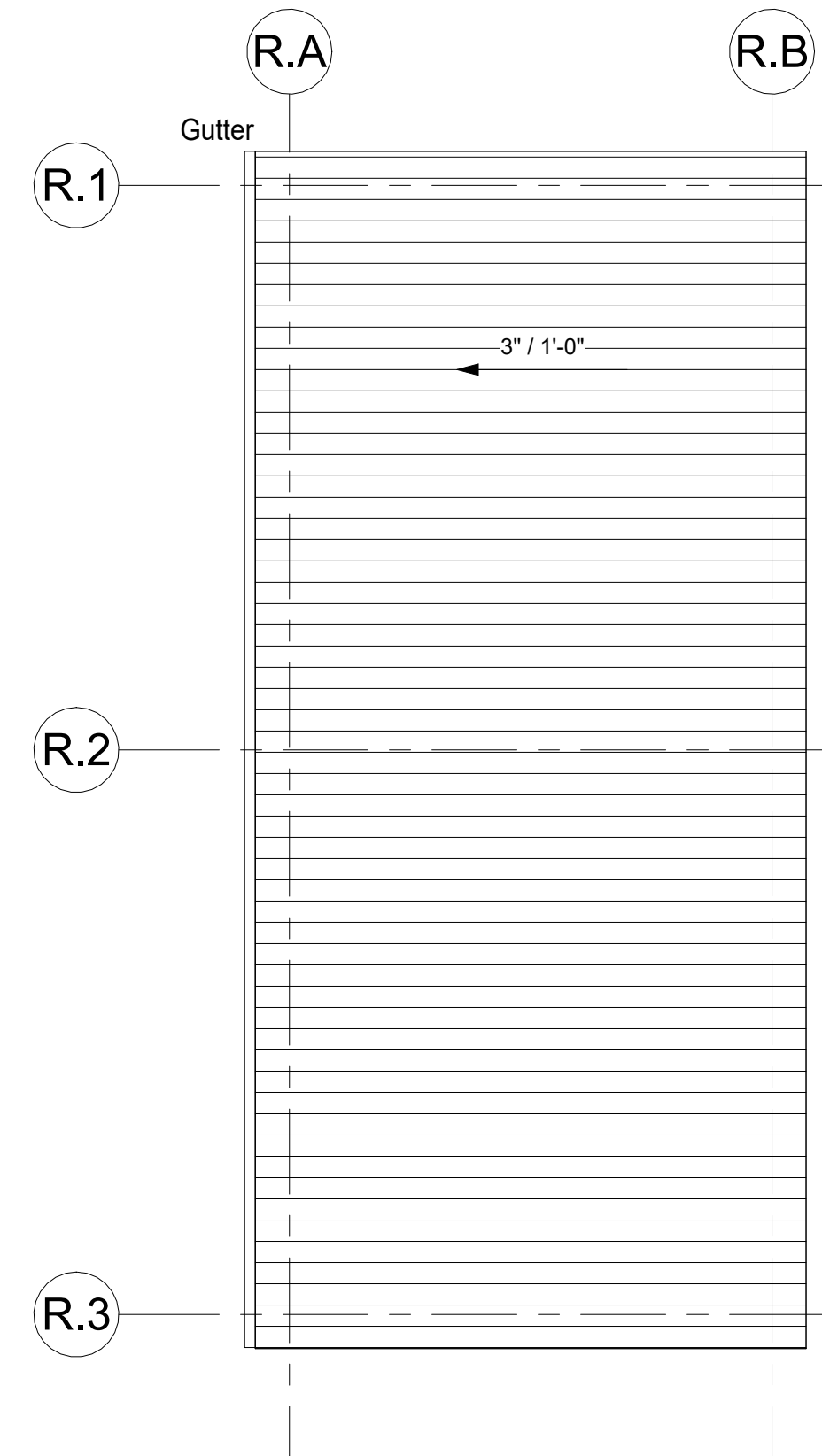


 **1** FIRST FLOOR PLAN - WALLS & COLUMNS
S1.01 | 1/8" = 1'-0"





S1.02







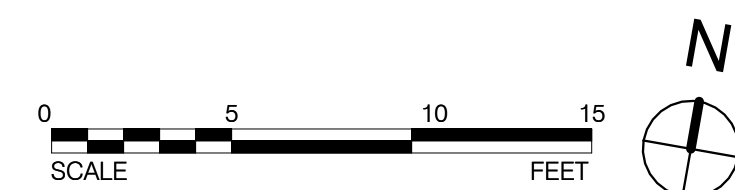
ROOF PLAN LEGEND

 Standing Seam Roof

 Green Roofing System (Extensive)

- SUPPLY DUCTWORK
- OUTSIDE AIR DUCTWORK
- EXHAUST DUCTWORK
- LAB EXHAUST DUCTWORK

	EXHAUST GRILLE		SUPPLY GRILLE
	THERMOSTAT		SIDEWALL SUPPLY GRILLE
	OCCUPANCY SENSOR		EXHAUST DIRECTION



1
A2.03

Roof Plan
Roof Plan
SCALE: 1/8" = 1'-0"

A2.03

