




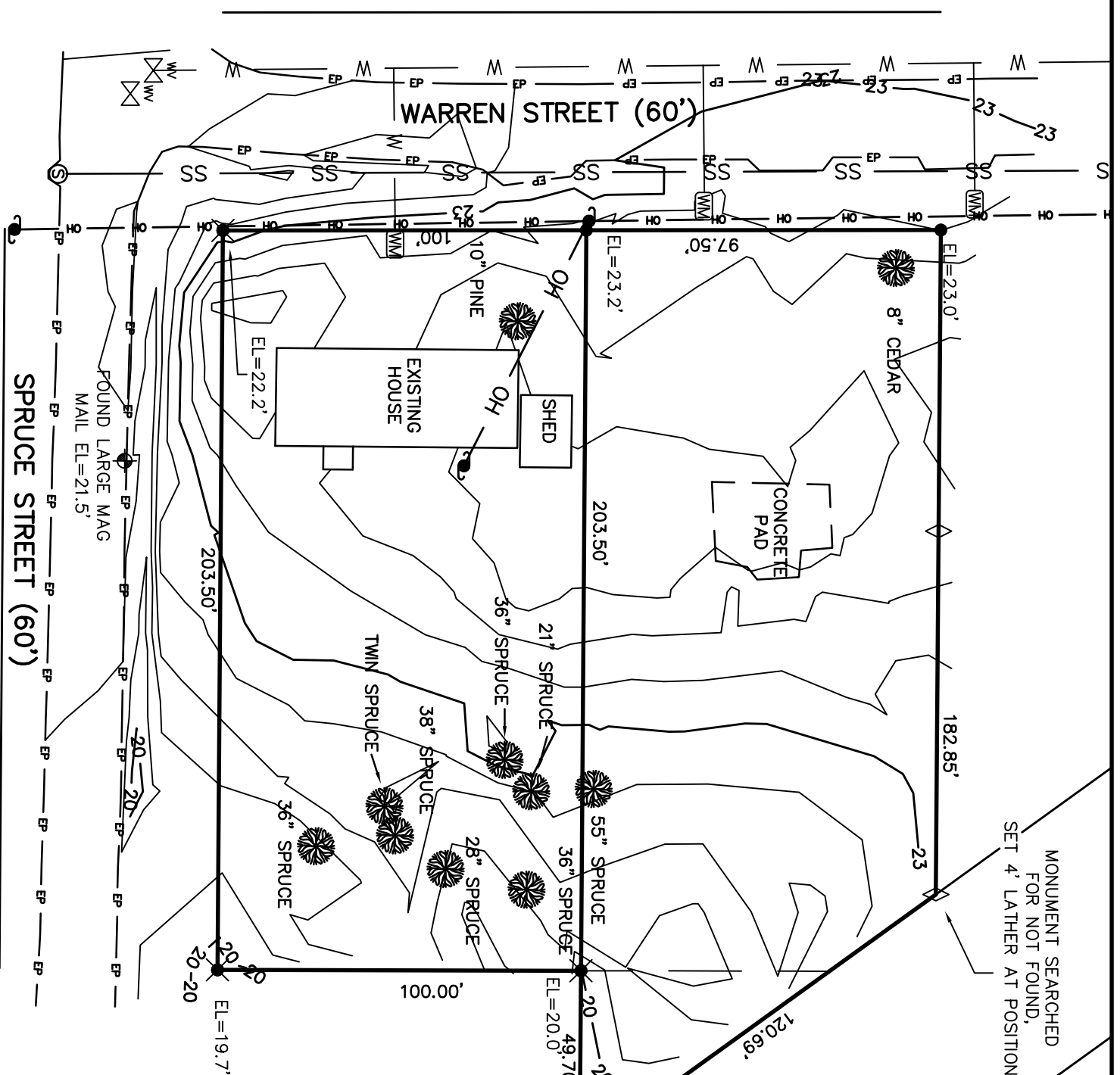
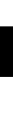


THIS IS A TOPOGRAPHIC MAP OF LOT 6 AND A PORTION OF LOT 5, BLOCK 11, CONE AND MCCOY'S ADDITION, AS WELL AS BLOCK 1 BARVIEW ADDITION TO BAY CITY. THE PURPOSE OF THIS MAP IS TO SHOW TOPOGRAPHIC INFORMATION AND UTILITIES IN RELATION TO THE BOUNDARY. THIS DOES CONSTITUTE AS A BOUNDARY SURVEY. FOR BOUNDARY INFORMATION SEE MAP A-5754, TILLAMOOK COUNTY SURVEY RECORDS. ELEVATIONS ARE DERIVED FROM GPS WITH AN OPUS SOLUTION AND ARE IN NAVD88. UTILITIES WERE LOCATED BASED ON ABOVE GROUND EVIDENCE ONLY. ONE CALL WAS NOT UTILIZED AND OTHER UTILITIES MAY BE PRESENT. CONTOURS ARE AT 0.5' INTERVALS.

- FOUND 5/8" REBAR WITH PLASTIC CAP MARKED "A DUNCAN LS 793", SEE MAP A-5754, ELEVATIONS NOTED
- ✖ FOUND 5/8" REBAR WITH PLASTIC CAP MARKED "PLS 1098", SEE MAP A-5497, ELEVATIONS NOTED

- | | |
|---|---------------------------|
|  | POWER POLE |
|  | WATER METER |
|  | WATER VALVE |
|  | SANITARY SEWER MANHOLE |
|  | TREES, SIZE AND TYPE NOTE |

N
SCALE:
1" = 40'



TOP0\WELCH-24-L.DWG.DWG
WELCH-24-L.TXT

John Eskin

OREGON
DECEMBER 3, 2014
DALLAS W. ESPLIN

RENEWALS: DECEMBER 31, 2025

© SURVEYING
BAYSIDE LLC
SURVEY BY:
6723 S. PRAIRIE RD

TOPOGRAPHIC MAP FOR:
LIANE WELCH

PORTION OF BLOCK 11, CONE AND MCCOY'S ADD
& BLOCK 1, BARVIEW ADDITION TO BAY CITY
NW 1/4 SW 1/4 SECTION 2, T1S R10W, W.M.
& SW 1/4 SW 1/4 SECTION 2, T1S R10W, W.M.
TILLAMOOK COUNTY, OREGON

DATE	EQUIPMENT	FIELD	DRAWN	CHECKED	JOB NUMBER
JANUARY 9, 2025	FC 6000, ES-103 TOPCON HIPER V	DCA/JOH	DCA	DWE	1906