

FINANCIALS

In 2020, TEP leveraged each federal National Estuary Program (NEP) dollar 5:1.

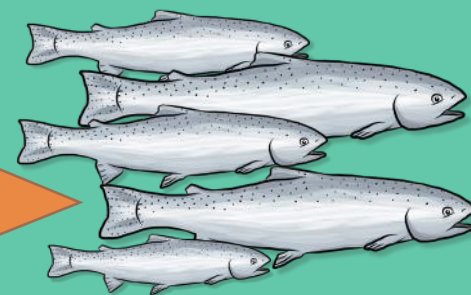
\$2.02 MILLION



2020 NATIONAL FUNDING



2020 TEP LEVERAGE



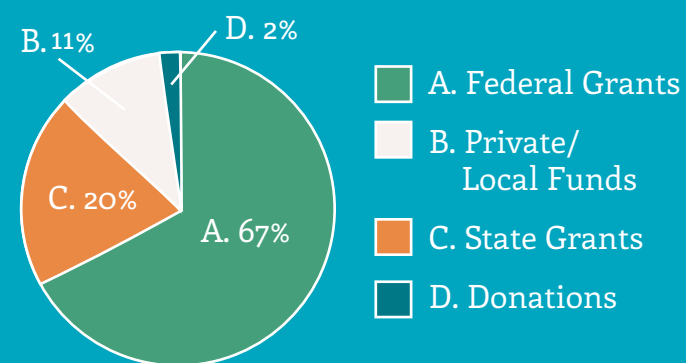
We brought \$2.02 MILLION IN CASH TO THE REGION, mostly for habitat restoration-related projects that directly benefit the people who live, work, and recreate in Tillamook County.

2020 YEAR IN REVIEW

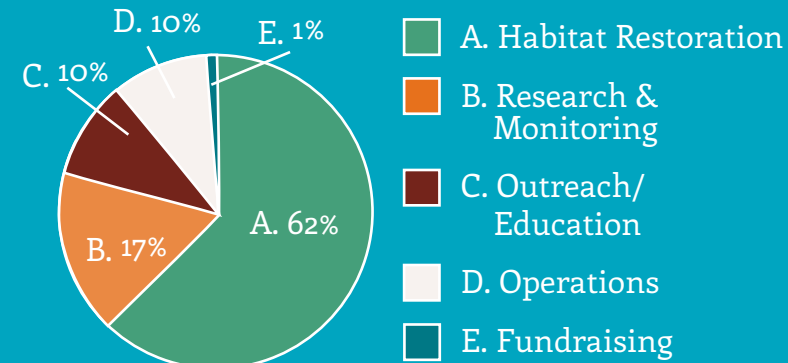
HEALTHY WATERSHEDS FOR A THRIVING COMMUNITY

Tillamook Estuaries Partnership
A National Estuary Project

2020 FUNDING SOURCES



HOW 2020 FUNDS WERE SPENT



BOARD OF DIRECTORS

Liane Welch, *President*
Nancy Hoffman, *Vice President*
Derek Wiley, *Secretary Treasurer*
Chris Knutsen
David Johnson
Amy Bennett
Sarah Absher
Clifford Rone
John Kirby
Kurt Heckeroth (*retired*)
Valerie Hendon (*retired*)
Yvonne Vallette (*Ex Officio*)
Peter Murchie (*Ex Officio*)
Greg Cermak (*Ex Officio*)
Ellie Hilger (*Ex Officio*)

STAFF

Kristi Foster, *Executive Director*
Claudine Rehn, *Deputy Director*
David Harris, *Habitat Restoration Project Manager*
York Johnson, *Water Resources Manager*
Maysa Miller, *Native Plant Nursery Coordinator*
Alix Lee-Tigner, *Community Education & Engagement Coordinator*
Tamara Enz, *Habitat Assessment and Monitoring Coordinator*
Debra Grace, *Administrative Assistant*
Bruce Cardin, *Education Events Assistant*

Gina Kennedy, *VetsWork Fellow*
Chris Sutherland, *Vetswork Fellow*



Tillamook Estuaries Partnership
503-322-2222
www.tbnep.org



TILLAMOOK BAY



NESTUCCA BAY



NEHALEM BAY



NETARTS BAY



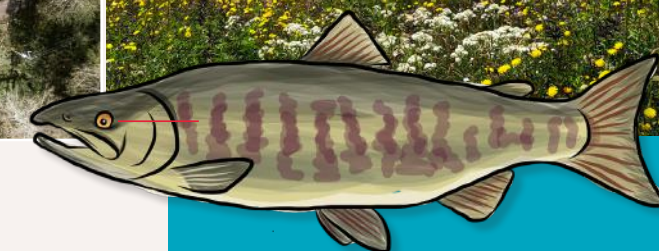
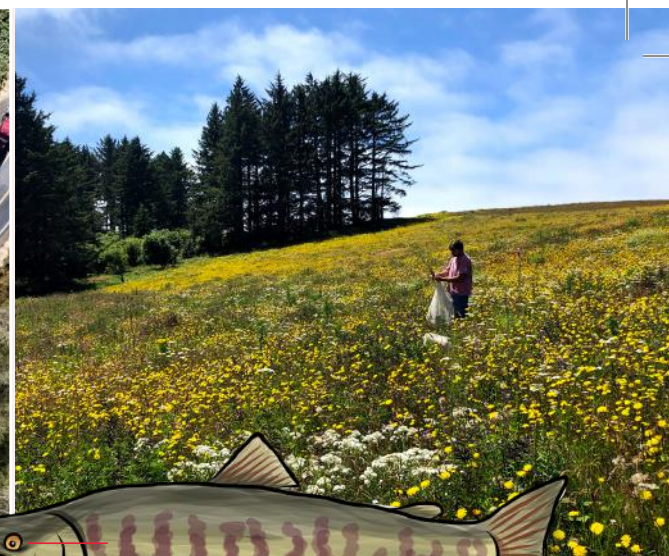
SAND LAKE



OUR MISSION

Tillamook Estuaries Partnership is a nonprofit organization dedicated to the conservation and restoration of Tillamook County's watersheds through active stewardship, scientific inquiry, community engagement, and education.

WWW.TBNEP.ORG



2020

A YEAR FOR REFLECTION ON THE WORK WE DO AND WHY IT IS IMPORTANT

UNPRECEDENTED CIRCUMSTANCES

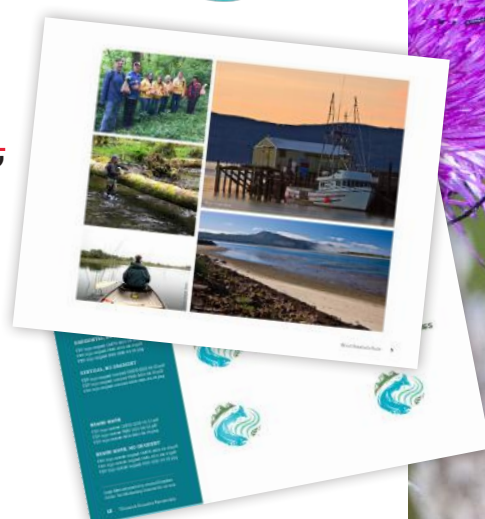
To meet our goals in 2020, we had to adjust to the realities of the COVID-19 pandemic. Our Volunteer Water Quality Monitoring Program implemented new safety protocols. The Native Plant Nursery hosted our first drive thru native plant sale. We took Tillamook County's students on virtual field trips. It may have been an atypical year, but our staff and volunteers rose to the challenge — all while working from home.

NEW LOGO & BRANDING

Things are looking a little different! After more than 25 years, we wanted to get back to our roots to realign our image and messaging. TEP's new logo and branding reflect the ideas that fuel and inform everything we do. After all, our work is all around you.

Our Values:

- Rooted in Science
- Maximum Benefits for All
- Passion for Restoration
- Contribution to Community



37,000 NATIVE PLANTS

More than 37,000 native plants distributed by our native plant nursery for use in habitat restoration projects.

1,870 WATER SAMPLES

1,870 water samples were collected and analyzed to monitor bacteria levels throughout Tillamook County.

1,500 HOURS

Volunteers donated more than 1,500 hours at a value exceeding \$42,800.

6.2 MILES OF HABITAT

Replacing the undersized, perched Peterson Creek culvert with a bridge improved access to more than 6 miles of spawning and rearing habitat for coho salmon, as well as Chinook, chum, steelhead, cutthroat and lamprey.

5,600 HOURS

More than 5,600 hours contributed by at risk youth at our nursery operations.

14,263 TREES AND SHRUBS

14,263 trees and shrubs were planted by TEP's Backyard Planting Program to enhance 14.6 acres of riparian habitat.

70 ACRES

Acquisition of the Tillamook River Wetlands property by the North Coast Land Conservancy was the first step in the planned restoration of 70 acres of tidal marsh habitat.



STATE OF THE BAYS

We released our State of the Bays Report — an assessment of the progress made toward our habitat, water quality, and community education and engagement action plans over the last 5 years.



Design & Illustration by Elise Wahl